



Baker Atlas



FILE NO:	COMPANY	VULCAN MINERALS INC.
API NO:	WELL	VULCAN INVESTCAN RED BROOK #2
	FIELD	BAY ST. GEORGE BASIN
	PROVINCE	NEWFOUNDLAND AND LABRADOR
Ver. 3.87	LOCATION:	OTHER SERVICES
UID:		ZDL-CN-GR-CAL
N/A		HDIL-GR-CAL, CYL
LICENSE:	BH LOC. LSD:	GR-STAR, GR-XMAC
ADW 2009-116-03	LAT 48.2679591667	RCOR, VSP
	LONG -58.7501141667	FMT
PERMANENT DATUM	G.L.	ELEVATION
LOG MEASURED FROM	K.B.	6.3 M
DRILL MEAS. FROM	KELLY BUSHING	ABOVE P.D.
		ELEVATIONS:
		KB 63.4 M
		DF
		GL 57.1 M
DATE	25-NOV-2009	
RUN	TRIP	2
SERVICE ORDER	CA210569	
DEPTH DRILLER	1965.0 M	
DEPTH LOGGER	1962.0 M	
BOTTOM LOGGED INTERVAL	1945.4 M	
TOP LOGGED INTERVAL	800.0 M	
CASING DRILLER	244.5 MM	885.0 M
CASING LOGGER	884.6 M	
BIT SIZE	216.0 MM	
TYPE OF FLUID IN HOLE	POLYMER	
DENSITY	1260.0 G/L	80.0 S
PH	11.2	4.8 ML
SOURCE OF SAMPLE	TOOL MEASURED	
RM AT MEAS. TEMP.	0.30 OHMM	23.4 DEGC
RM AT MEAS. TEMP.	0.24 OHMM	23.4 DEGC
RMC AT MEAS. TEMP.	0.36 OHMM	23.4 DEGC
SOURCE OF RMF	CALCULATED	CALCULATED
RM AT BHT	0.30 OHMM	23.4 DEGC
TIME SINCE CIRCULATION	17.5 HOURS	
MAX. RECORDED TEMP.	27.4 DEGC	
EQUIP. NO.	6555	OH NISKU
RECORDED BY	J. HOUSE / R. NEUPANE	
WITNESSED BY	M. SMITH	

IN MAKING INTERPRETATIONS OF LOGS OUR EMPLOYEES WILL GIVE CUSTOMER THE BENEFIT OF THEIR BEST JUDGEMENT. BUT SINCE ALL INTERPRETATIONS ARE OPINIONS BASED ON INFERENCES FROM ELECTRICAL OR OTHER MEASUREMENTS, WE CANNOT, AND WE DO NOT GUARANTEE THE ACCURACY OR CORRECTNESS OF ANY INTERPRETATION. WE SHALL NOT BE LIABLE OR RESPONSIBLE FOR ANY LOSS, COST, DAMAGES, OR EXPENSES WHATSOEVER INCURRED OR SUSTAINED BY THE CUSTOMER RESULTING FROM ANY INTERPRETATION MADE BY ANY OF OUR EMPLOYEES.

BOREHOLE RECORD		
BIT SIZE	FROM	TO
444.5 MM	0.0 M	220.2 M
311.0 MM	220.2 M	895.0 M
216.0 MM	895.0 M	1965.0 M
NA	NA	NA

CASING RECORD				
SIZE	WEIGHT	GRADE	FROM	TO
339.7 MM	71.4 KG/M	J-55	0.0 M	220.2 M
244.5 MM	64.7 KG/M	L-80	0.0 M	331.8 M
244.5 MM	53.6 KG/M	J-55	331.8 M	895.0 M
177.8 MM	NA	NA	NA	NA

REMARKS

RUN 2 TRIP 2 : TIME STOPPED CIRCULATION: 25-NOV-2009 02:15

RIG: STONEHAM #11

CREW: J. HOUSE, R. NEUPANE, D. SCHNEIDER, A. MITTELSTADT,
L. HICKS, J. ESCHNER, M. MONGER

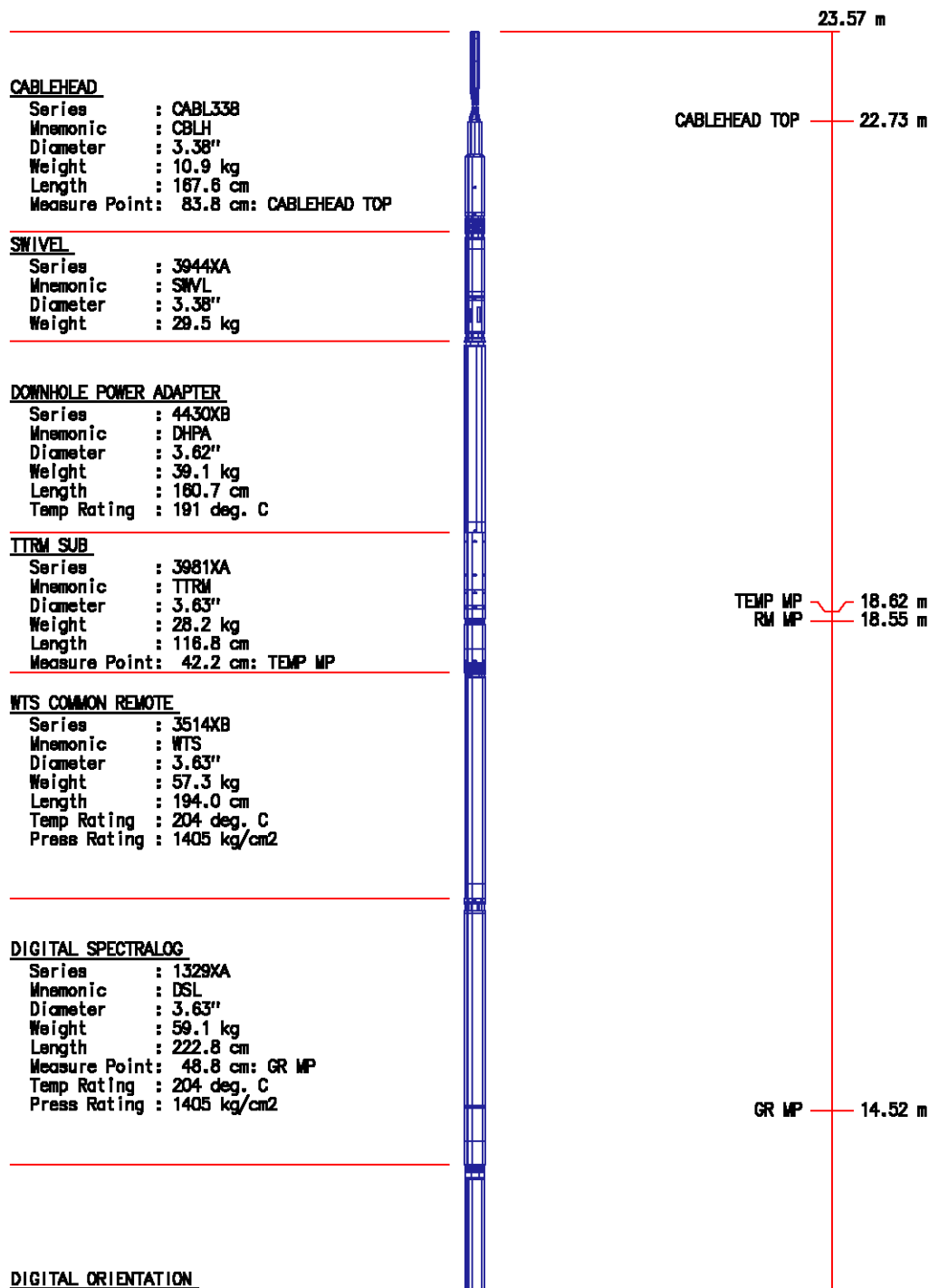
EQUIPMENT DATA

RUN	TRIP	TOOL	SERIES NO.	SERIAL NO.	POSITION
2	2	CW/MT	3044XA	73677	FBT

2	2	SWIVEL	3944XA	73677	FREE
2	2	PWR ADAPTR	4430XB	10156399	FREE
2	2	TTRM	3981XA	369687	FREE
2	2	COMM RMT	3514XB	186131	FREE
2	2	GR/DSL	1329XB	370830	FREE
2	2	ORT	4401XB	10115896	FREE
2	2	XMAC ELEC	1667EA	153337	CENTRALIZED
2	2	XMAC RX MAN	1678MA	189391	CENTRALIZED
2	2	XMAC ISO	1668PA	172683	CENTRALIZED
2	2	XMAC TX	1668BA	188362	CENTRALIZED
2	2	XMAC EL	1668FA	154044	CENTRALIZED

INSTRUMENT CONFIGURATION

Source File: /dat1a/pass/vulcan/ku833k~VUL-tdg



Series : 4401XB
Mnemonic : ORIT
Diameter : 3.38"
Weight : 50.0 kg
Length : 329.4 cm
Measure Point: 0.0 cm: ORIENT MP
Temp Rating : 177 deg. C
Press Rating : 1054 kg/cm2

ORIENT MP 10.74 m

ARRAY ACOUSTILOG ELECTRONICS

Series : 1667EA
Mnemonic : DAC
Diameter : 3.38"
Weight : 61.8 kg
Length : 238.3 cm
Temp Rating : 191 deg. C
Press Rating : 1405 kg/cm2

CROSS MULTIPOLE ARRAY ACOUSTILOG

Series : 1678MA
Mnemonic : XMAC
Diameter : 3.88"
Weight : 68.2 kg
Length : 332.4 cm
Measure Point: 167.6 cm: R8
Measure Point: 152.4 cm: R7
Measure Point: 137.2 cm: R6
Measure Point: 121.9 cm: R5
Measure Point: 106.7 cm: R4
Measure Point: 91.4 cm: R3
Measure Point: 76.2 cm: R2
Measure Point: 61.0 cm: R1
Temp Rating : 204 deg. C

R8 6.71 m
R7 6.56 m
R6 6.41 m
R5 6.25 m
R4 6.10 m
R3 5.95 m
R2 5.80 m
R1 5.64 m

MULTI-POLE ARRAY ACOUSTIC

Series : 1668PA
Mnemonic : MAC
Diameter : 3.63"
Weight : 45.5 kg
Length : 152.4 cm
Temp Rating : 204 deg. C
Press Rating : 1405 kg/cm2

MULTI-POLE ARRAY ACOUSTIC

Series : 1668BA
Mnemonic : MAC
Diameter : 3.63"
Weight : 79.5 kg
Length : 210.8 cm
Measure Point: 165.1 cm: MONOPOLE T2 MP
Measure Point: 142.2 cm: DIPOLE T4 MP
Measure Point: 111.8 cm: DIPOLE T3 MP
Measure Point: 88.9 cm: MONOPOLE T1 MP
Temp Rating : 177 deg. C

MONOPOLE T2 MP 3.05 m
DIPOLE T4 MP 2.82 m
DIPOLE T3 MP 2.52 m
MONOPOLE T1 MP 2.29 m

MULTI-POLE ARRAY ACOUSTIC

Series : 1668FA
Mnemonic : MAC
Diameter : 3.38"
Weight : 34.1 kg
Length : 131.6 cm
Temp Rating : 204 deg. C
Press Rating : 1405 kg/cm2

BULL PLUG 3 3/8

0.00 m

TOTAL LENGTH: 23.57 m
TOTAL WEIGHT: 572.3 kg
MAX DIAMETER: 0'4.00"

PARAMETER AND FILTER SUMMARY REPORT

FILE: /dat1a/pass/vulcan/ku833k03.prm
LOGGING MODE: DEPTH DIRECTION: UP
TOP DEPTH: 792.328 m BOTTOM DEPTH: 1960.784 m

SYMMETRIC FILTER

MEASUREMENT TYPE	PARAMETER	VALUE	UNITS	INTERVAL (m)	
CHT	FILTER ()	medium (1)		TOP	BOTTOM
	FILTER (.h)	medium (1)		"	"
	FILTER (.l)	medium (1)		"	"
SPEED	FILTER (.h)	medium (1)		"	"
	FILTER (.l)	medium (1)		"	"
TENSION GR	FILTER ()	medium (1)		"	"
	FILTER ()	medium (1)		"	"
	FILTER (.h)	medium (1)		"	"
SL-II	FILTER (.l)	medium (1)		"	"
	FILTER	medium (1)		"	"

SLII PROCESSING

MEASUREMENT TYPE	PARAMETER	VALUE	UNITS	INTERVAL (m)	
E MATRIX	OPEN/CASED HOLE	OPEN HOLE		TOP	BOTTOM
SLII AUTO GAIN	AUTO GAIN	AUTO GAIN ON		"	"
SLII ENERGY RANGE	ENERGY RANGE	0.25-3.00 MeV		"	"
SPECTRUM CALIBRATION	MODE	AUTOMATIC		"	"

CURVE DESCRIPTION REPORT

CURVE NAME	CURVE ALIAS	CREATION DATE	CURVE DESCRIPTION
F1:CHT	CHT	Nov 25 18:18:32 2009	CABLE HEAD TENSION
F1:GR	GR	Nov 25 18:18:32 2009	GAMMA RAY
F1:GRSL	GRSL	Nov 25 18:18:32 2009	GAMMA RAY FROM 1329 SPECTRUM
F1:K	K	Nov 25 18:18:32 2009	POTASSIUM CONTENT
F1:KTH	KTH	Nov 25 18:18:32 2009	STRIPPED POTASSIUM-THORIUM
F1:MMRK	MMRK	Nov 25 18:18:32 2009	MINUTE MARK
F1:QCAL	QCAL	Nov 25 18:18:32 2009	QUALITY CURVE
F1:SPDQI	SPD.I	Nov 25 18:18:32 2009	SPEED
F1:TEN	TEN	Nov 25 18:18:32 2009	DIFFERENTIAL TENSION
F1:TH	TH	Nov 25 18:18:32 2009	THORIUM CONCENTRATION
F1:U	U	Nov 25 18:18:32 2009	URANIUM CONTENT

CURVE MEASURE POINT OFFSET

CURVE	OFFSET (m)	CURVE	OFFSET (m)	CURVE	OFFSET (m)	CURVE	OFFSET (m)
CHT	0.00	K	14.40	SPDQI	0.00	U	14.40
GR	14.40	KTH	14.40	TEN	0.00		
GRSL	14.40	QCAL	14.40	TH	14.40		

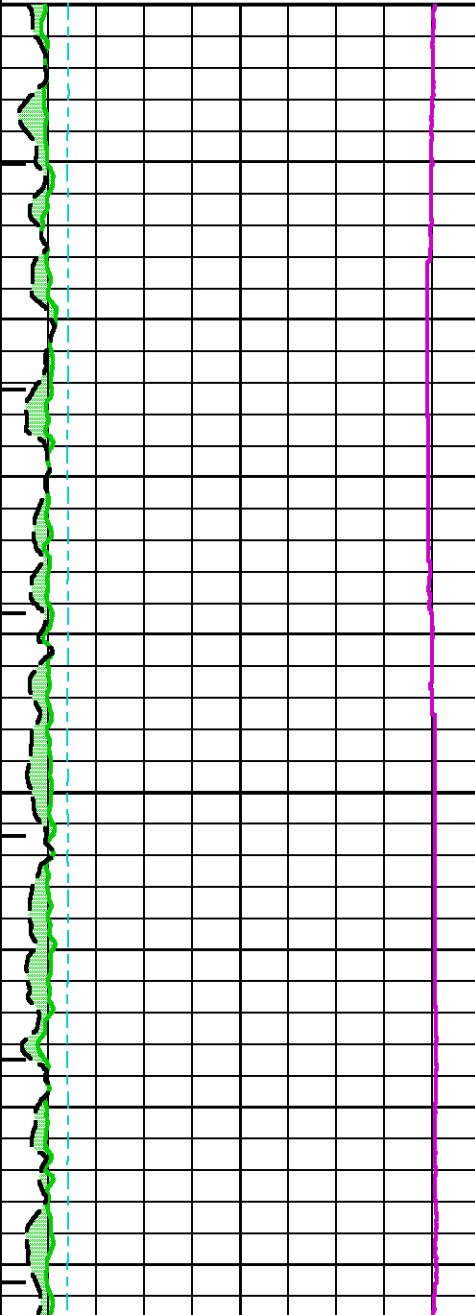
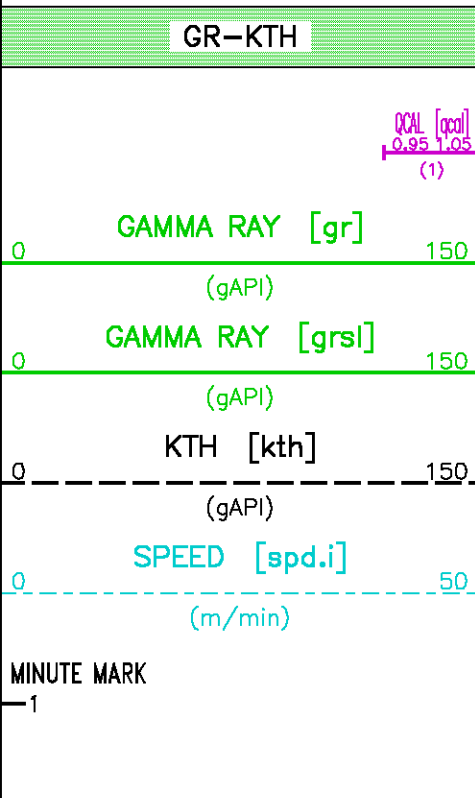
Presentation : cpu1:/dat1a/pass/vulcan/sl_main.pdf [1:240 Scale]
Plot Interval : 800 - 1961.08 Meters

Data File 1 : F1 : cpu1:/dat1a/pass/vulcan/ku833k03.xtf
Created On : Nov 25 18:18:32 2009
Company : VULCAN MINERALS INC.
Well : VULCAN INVESTCAN RED BROOK #2
Field : RED BROOK
File Interval : 774.878 - 1961.16 Meters
Oct : ku833k

GR BACKUP

ME

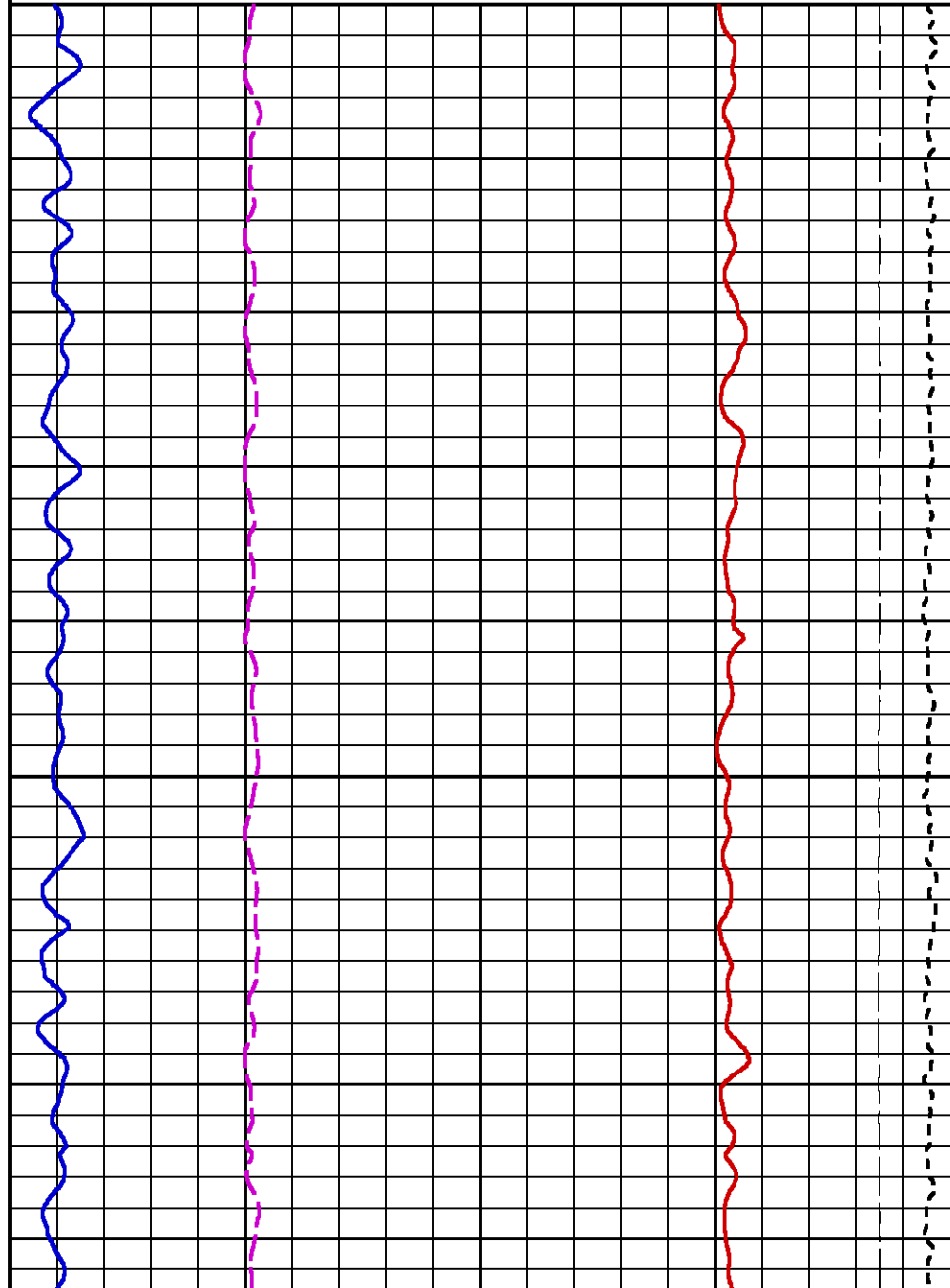
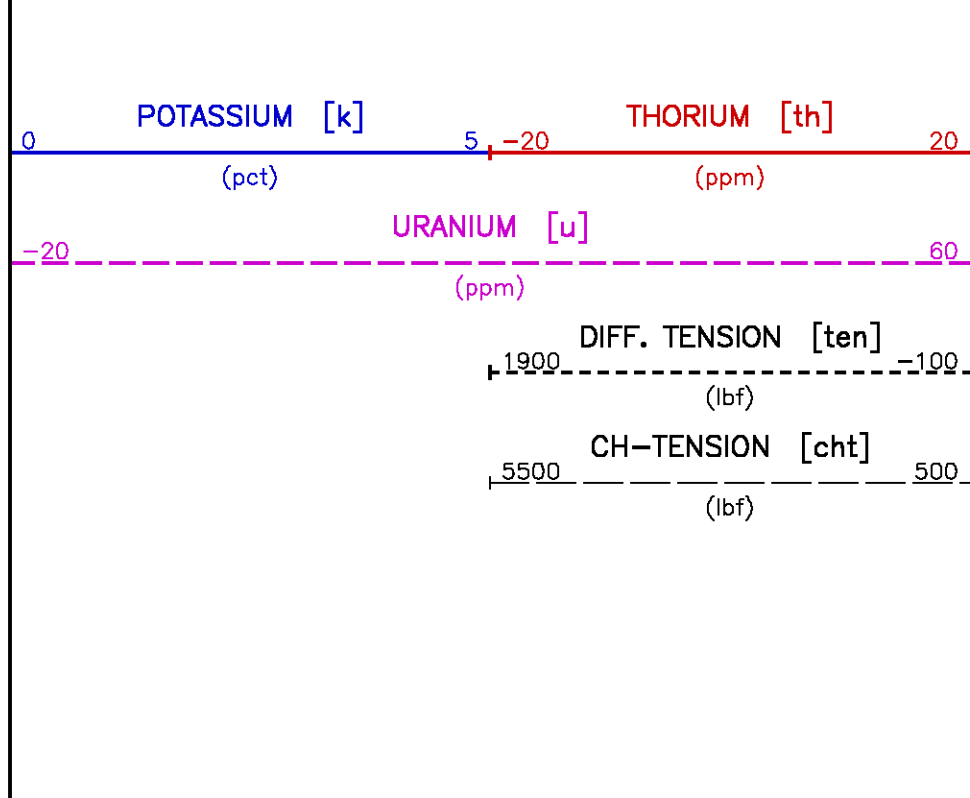
TOOL STICKING

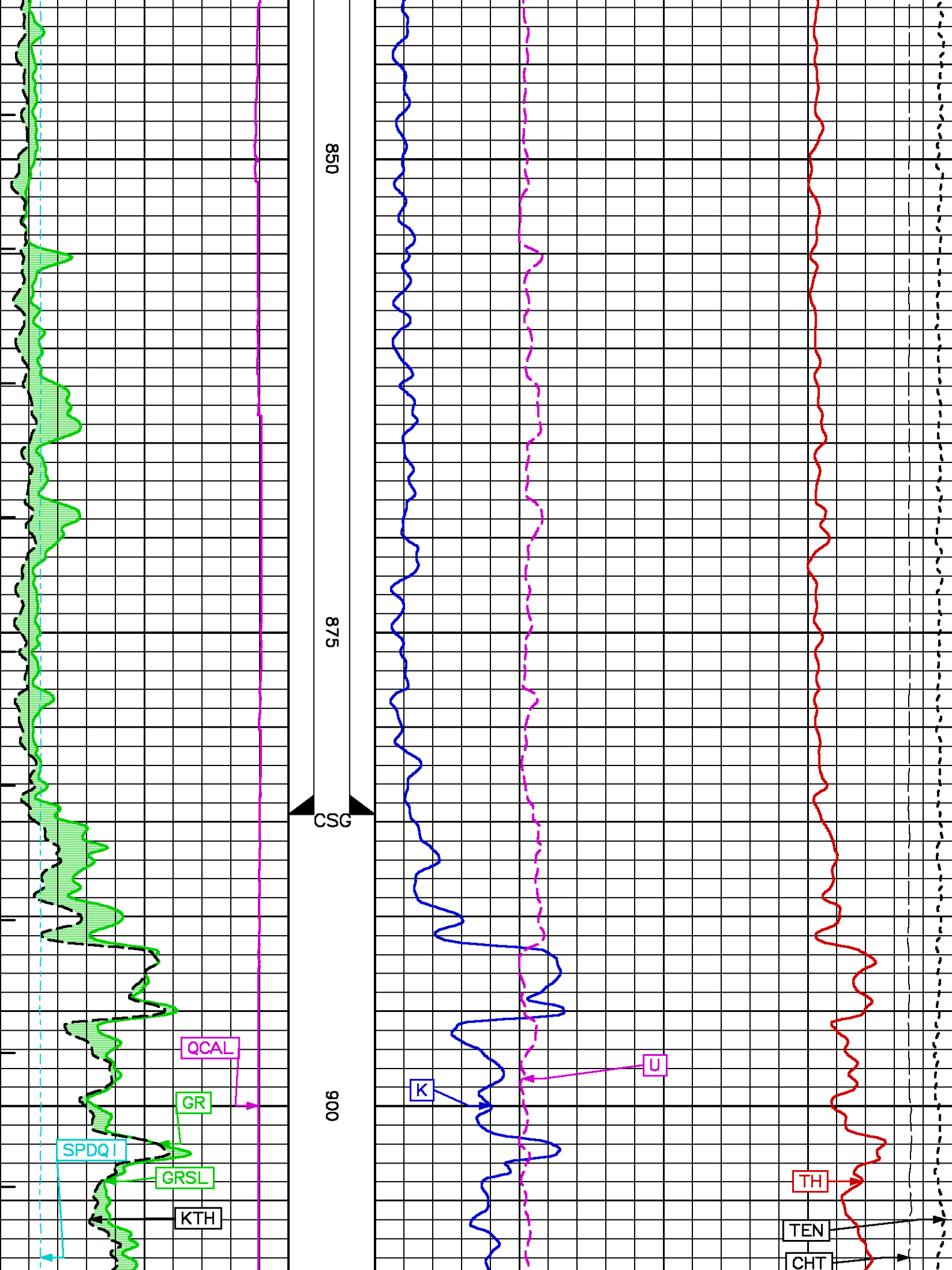


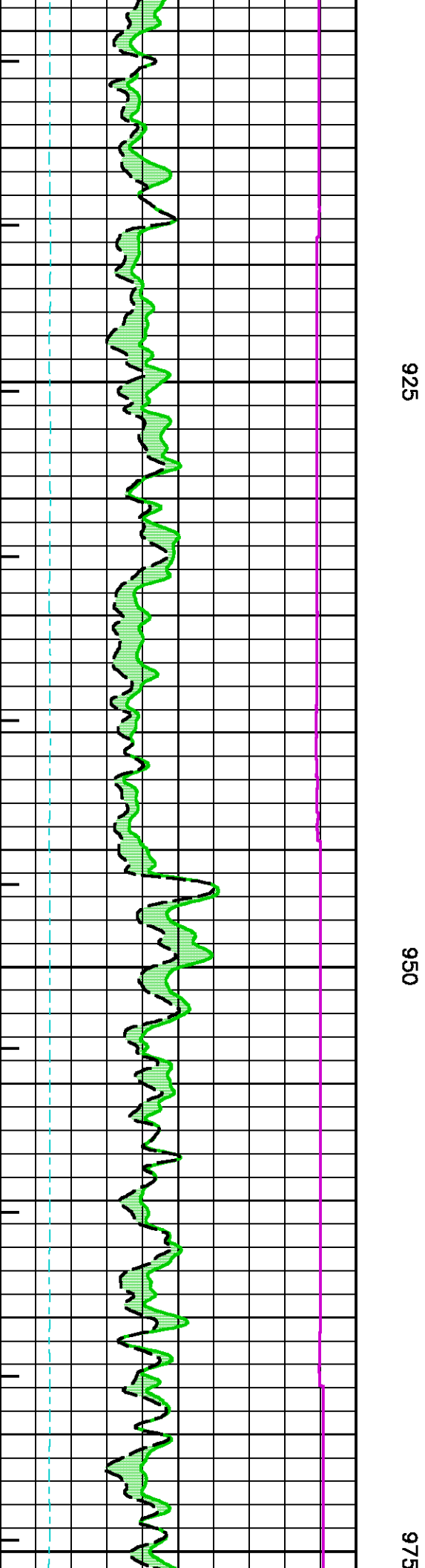
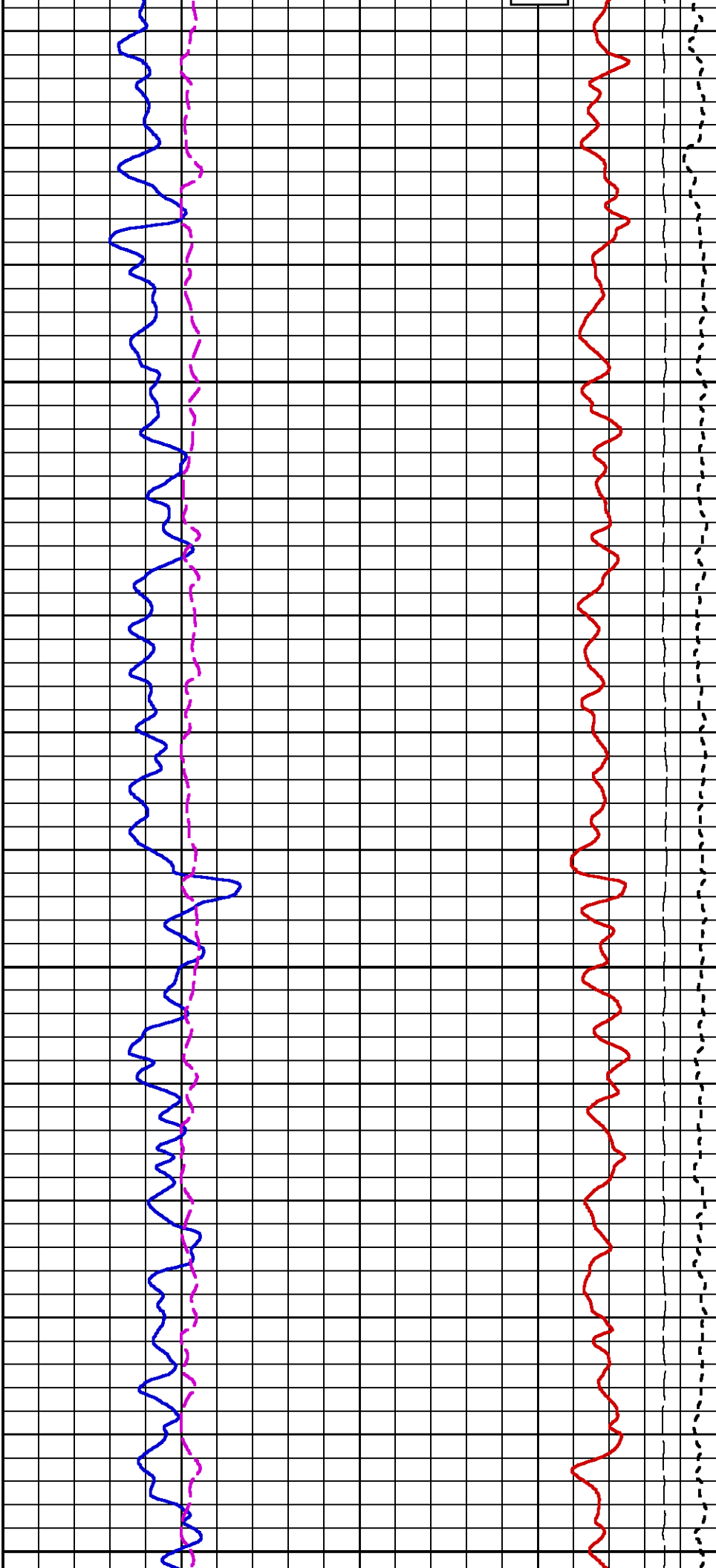
TERS

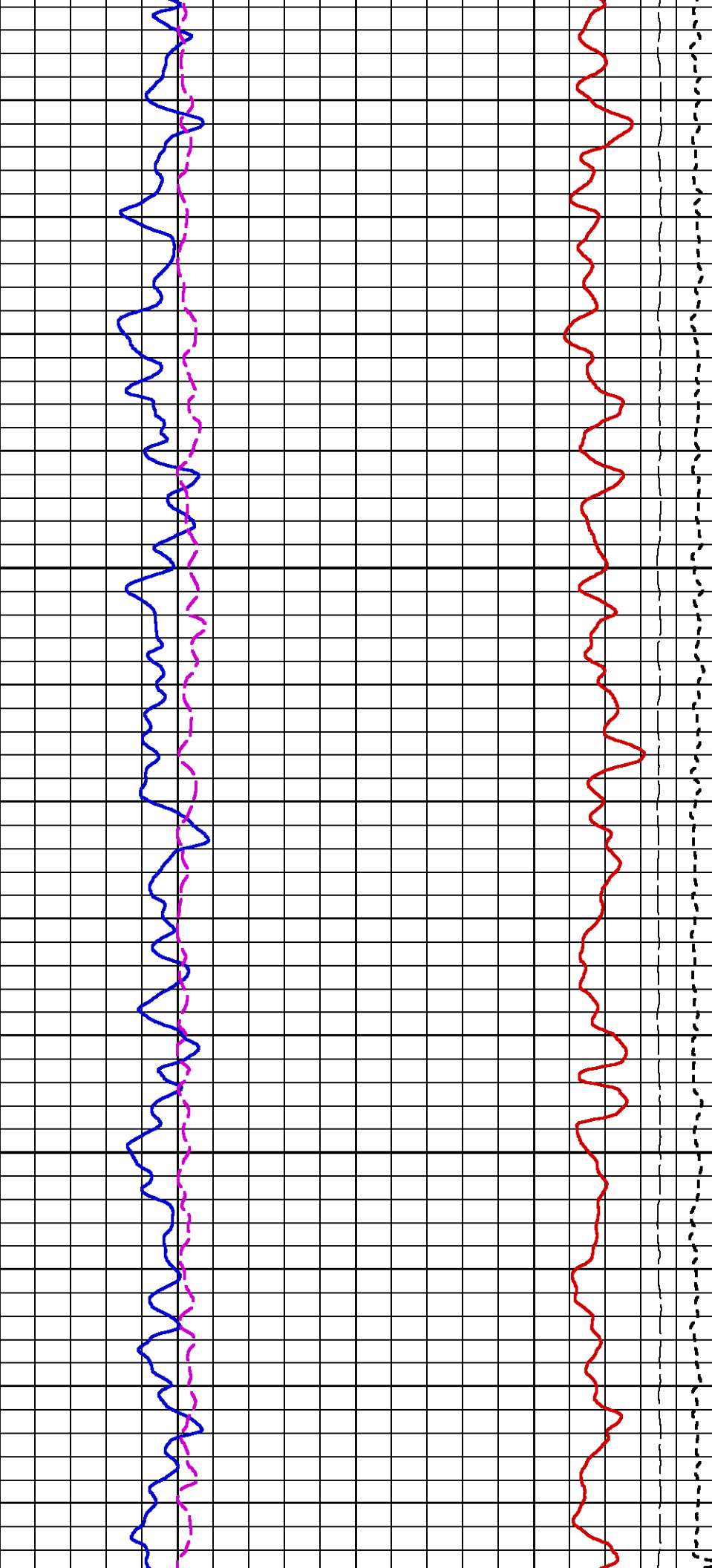
800

825



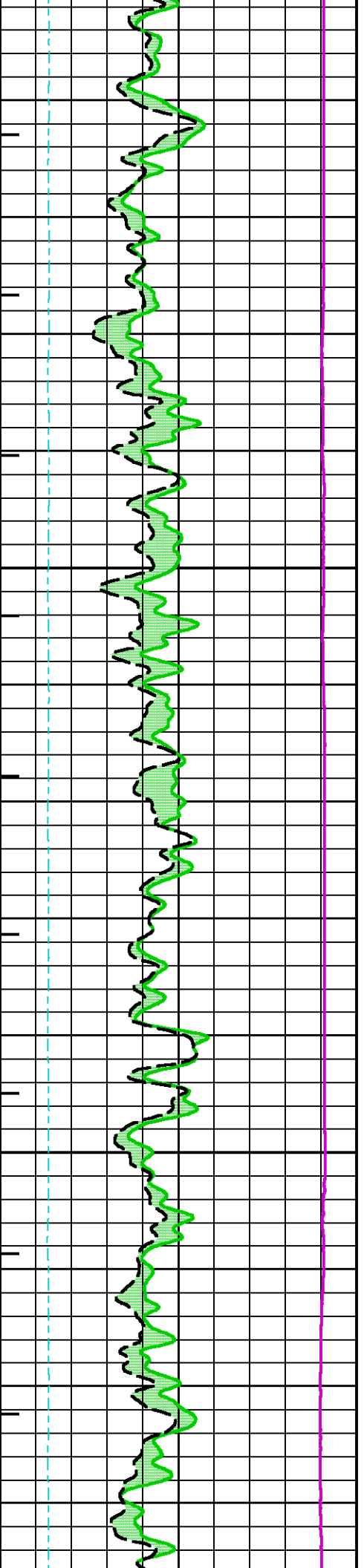


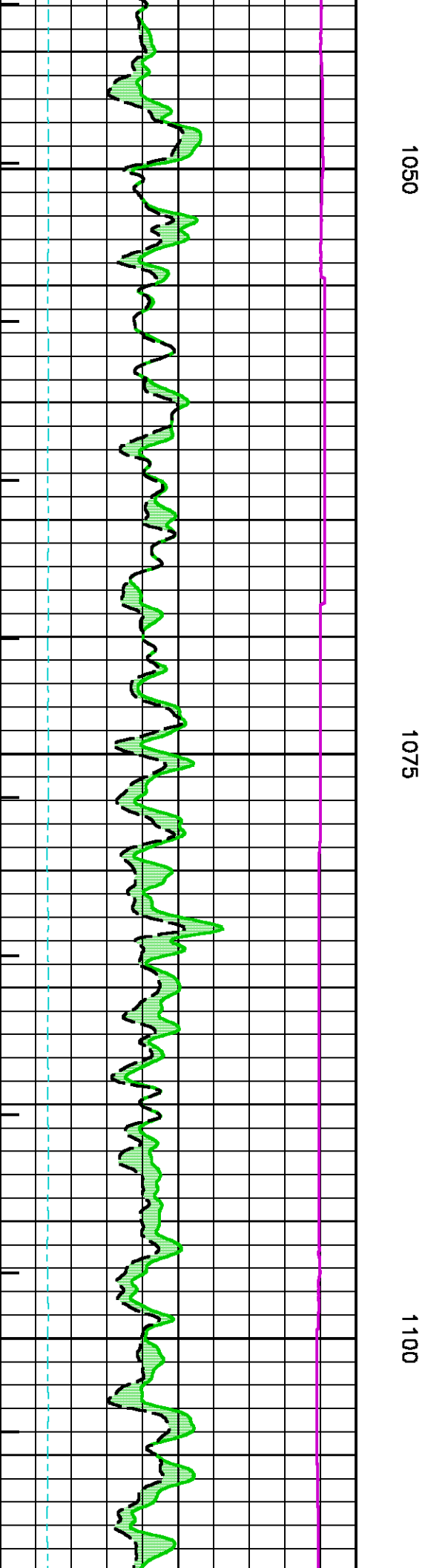
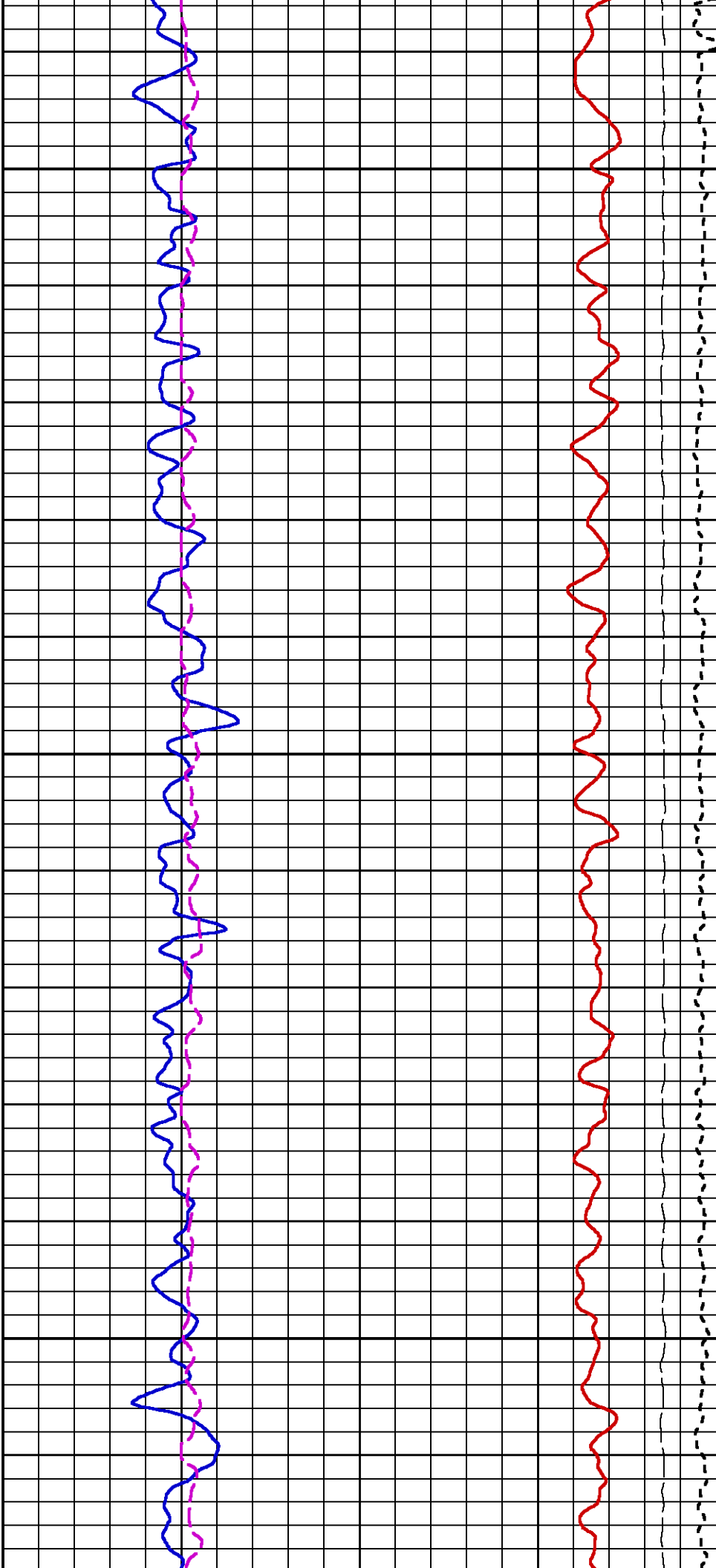


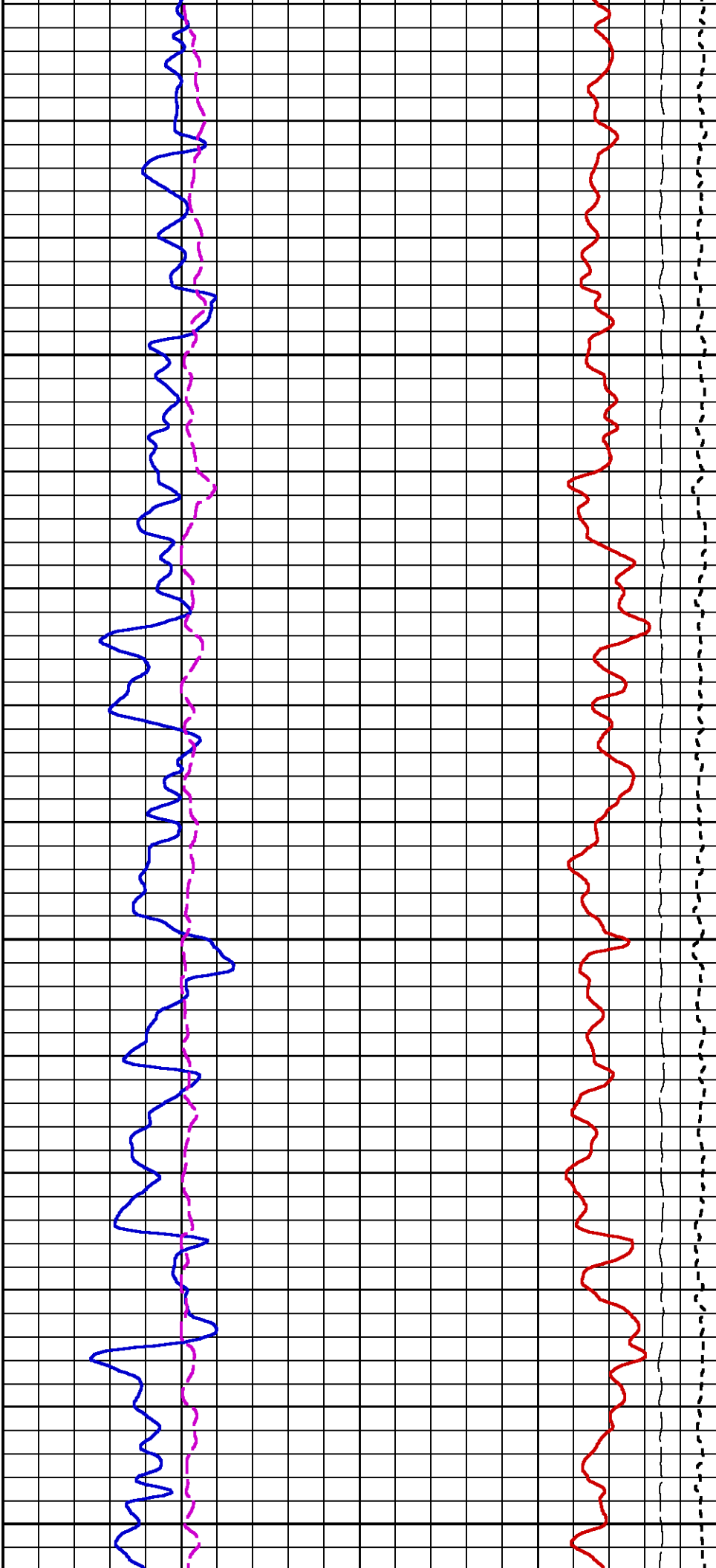


1000

1025



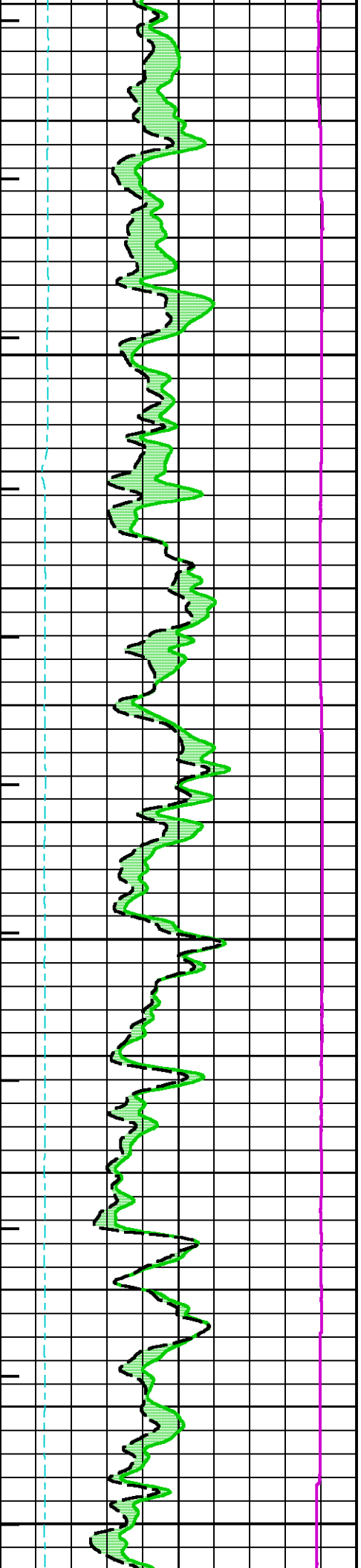


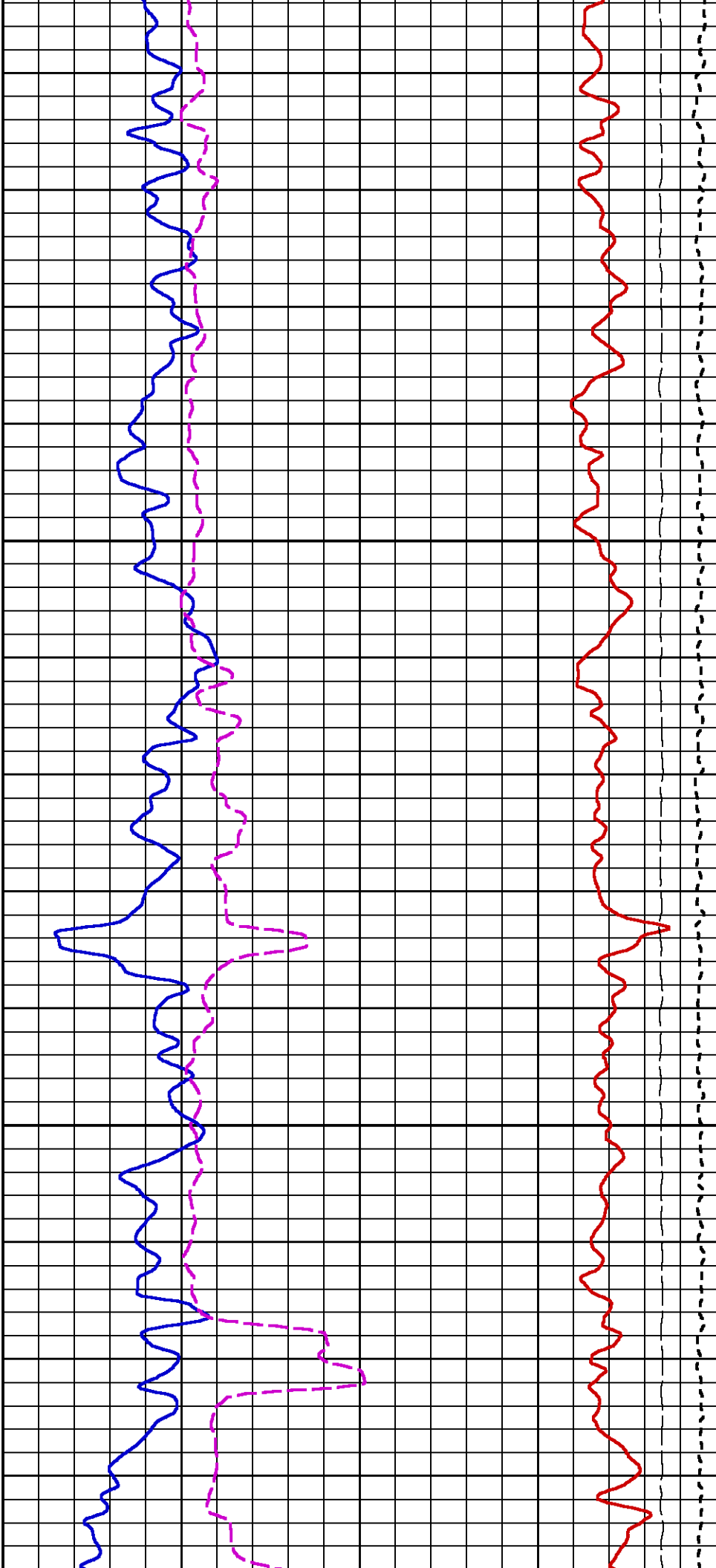


1125

1150

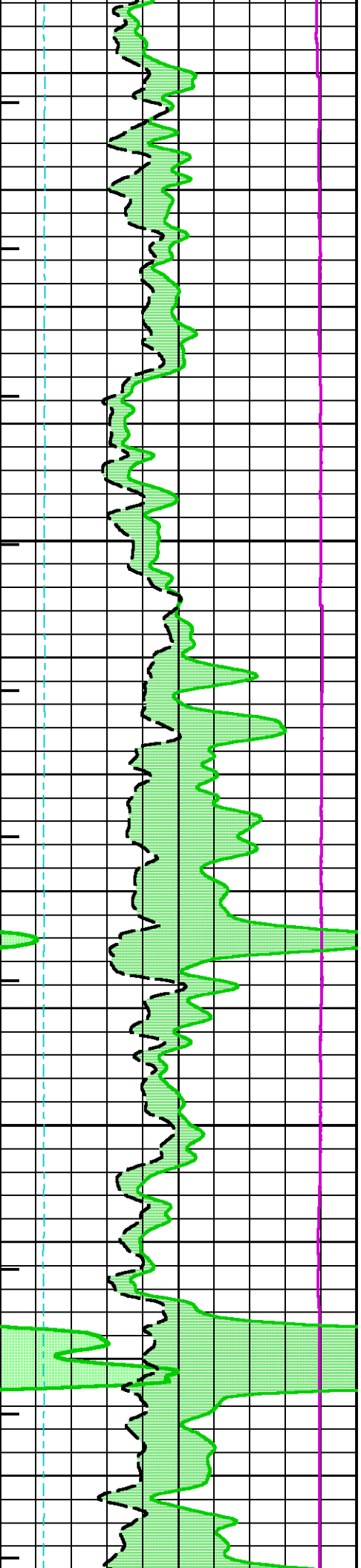
1175

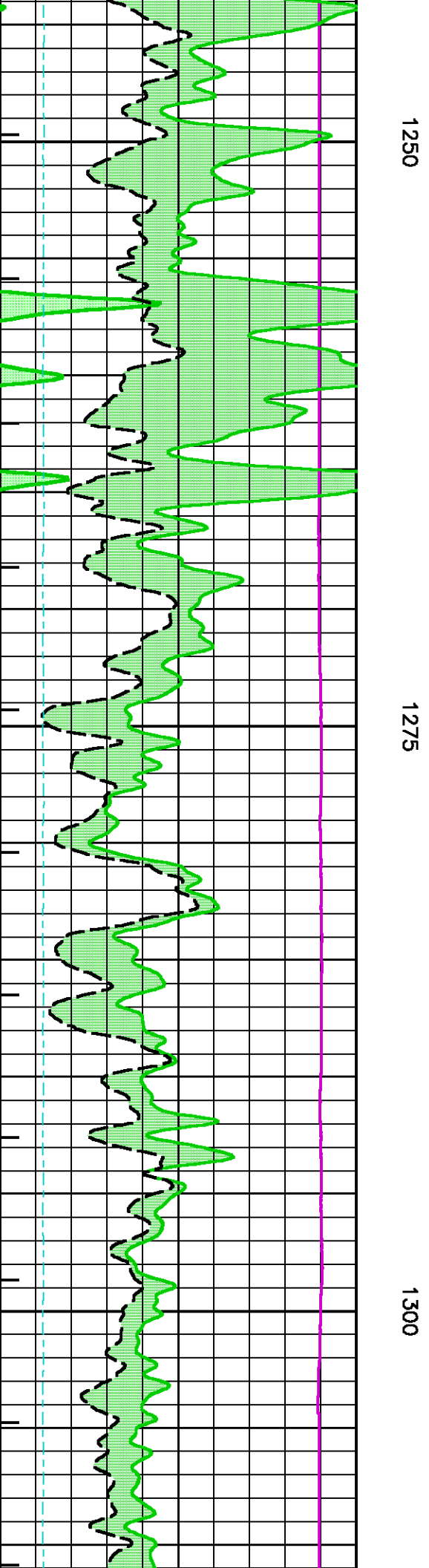
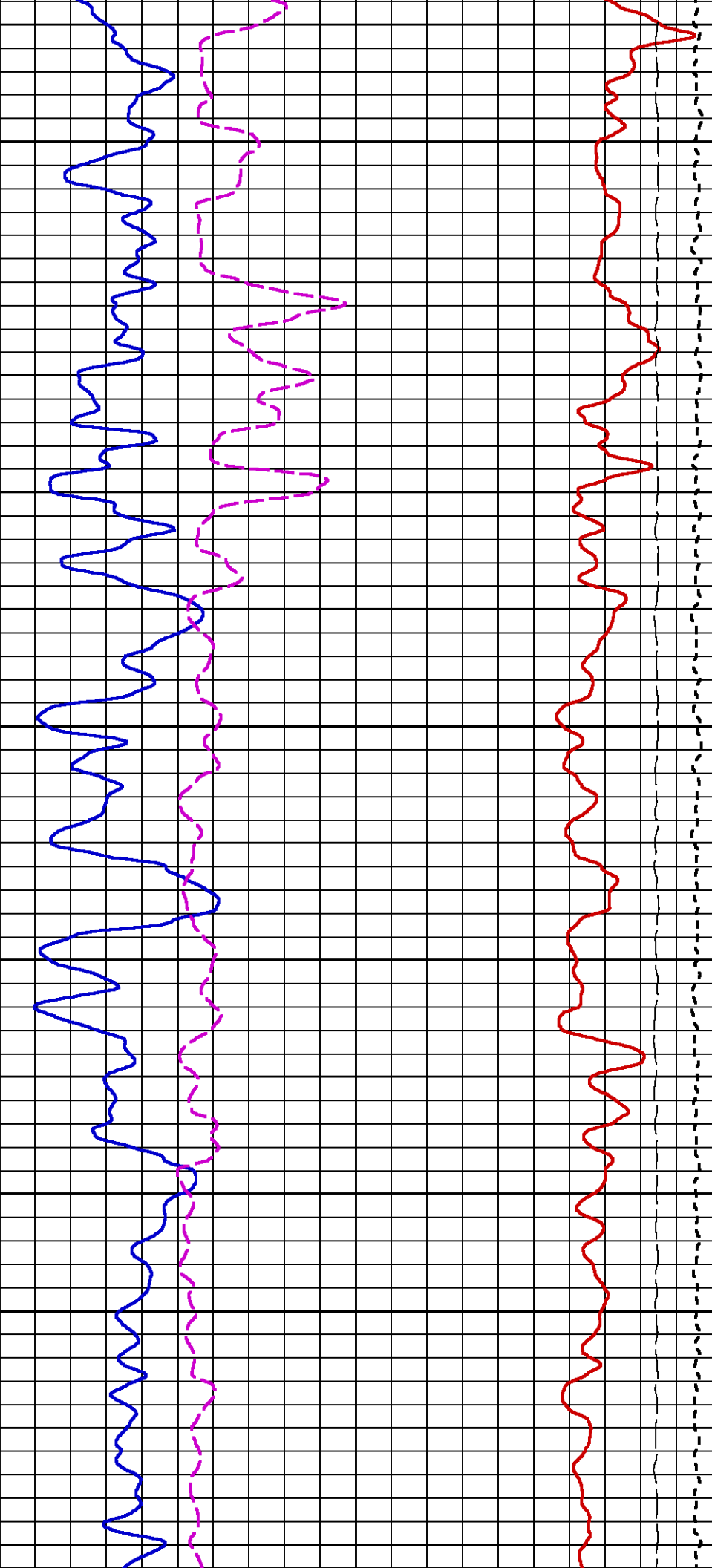


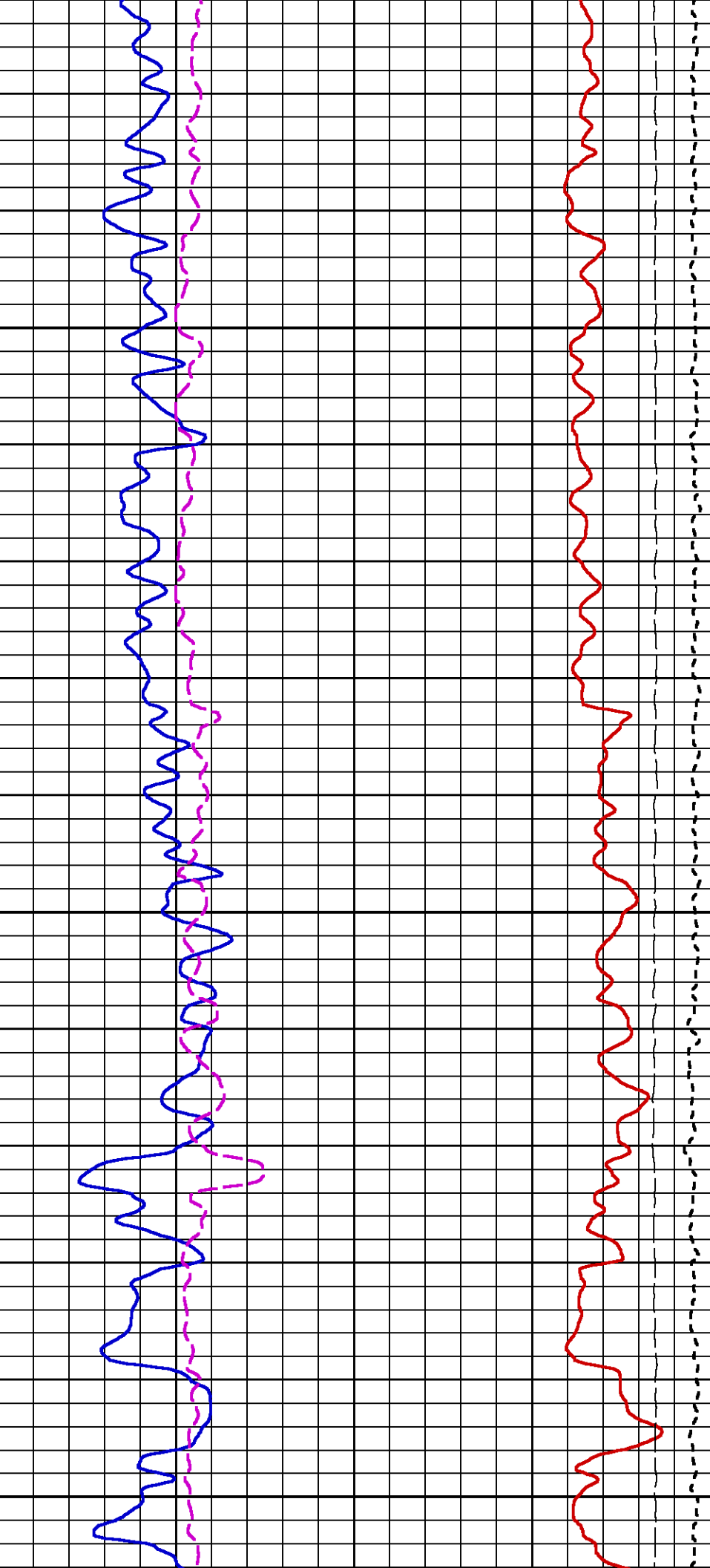


1200

1225



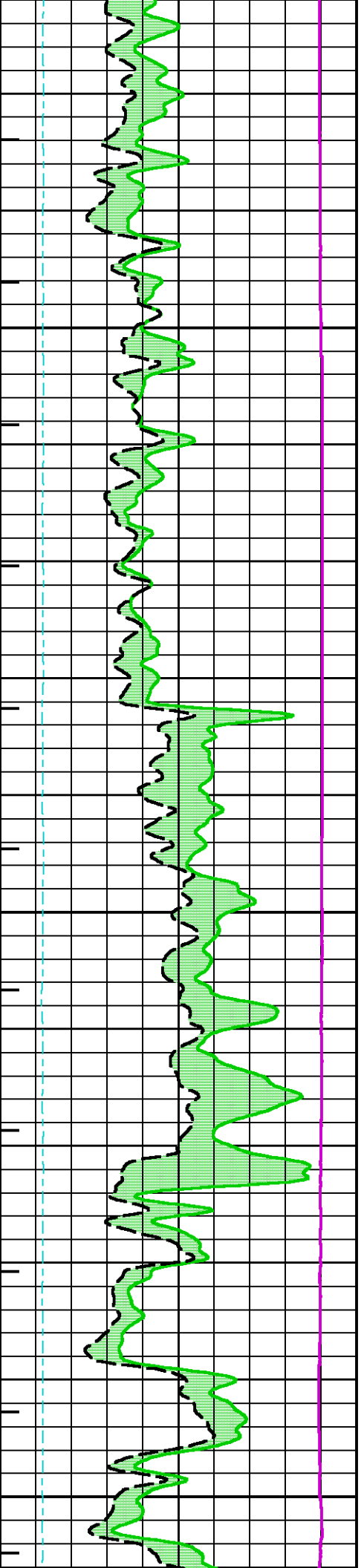


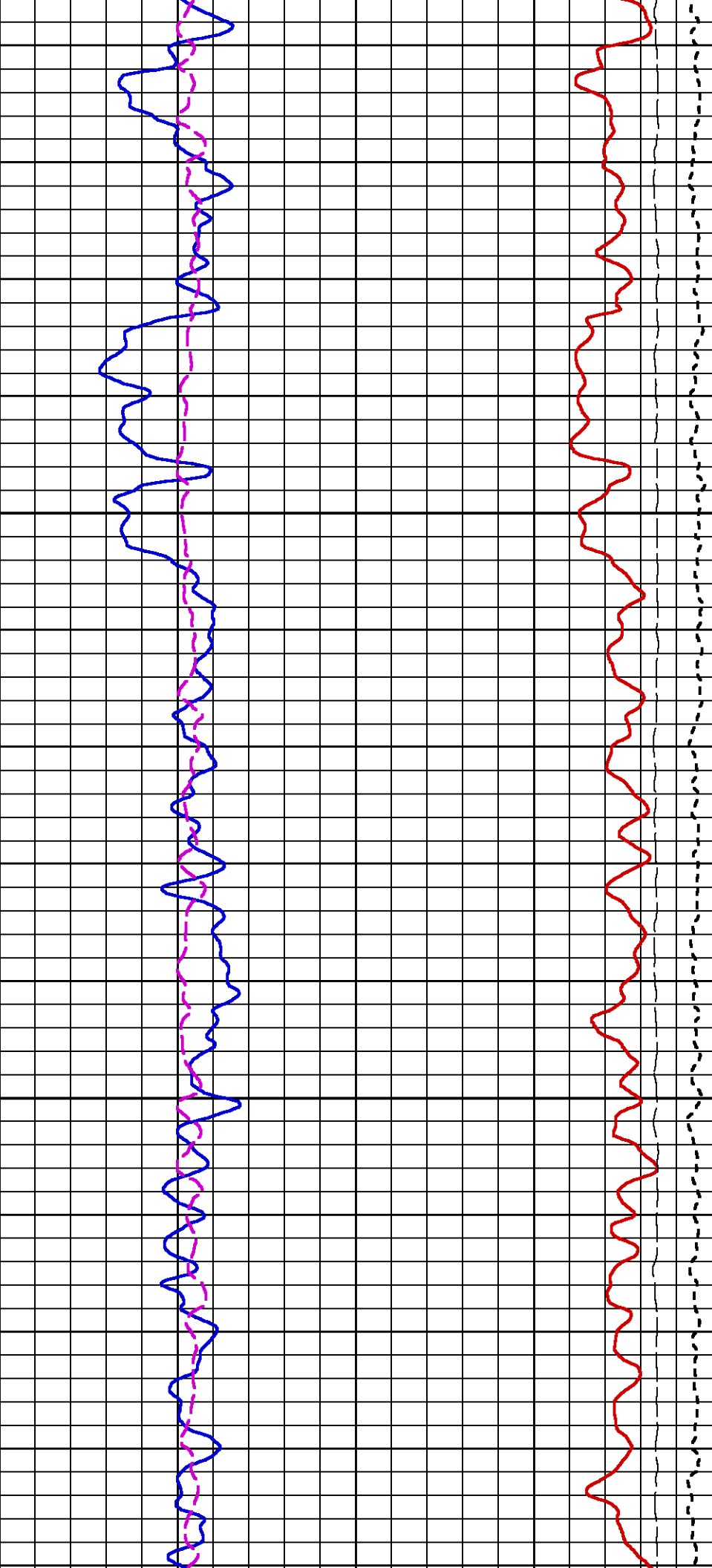


1325

1350

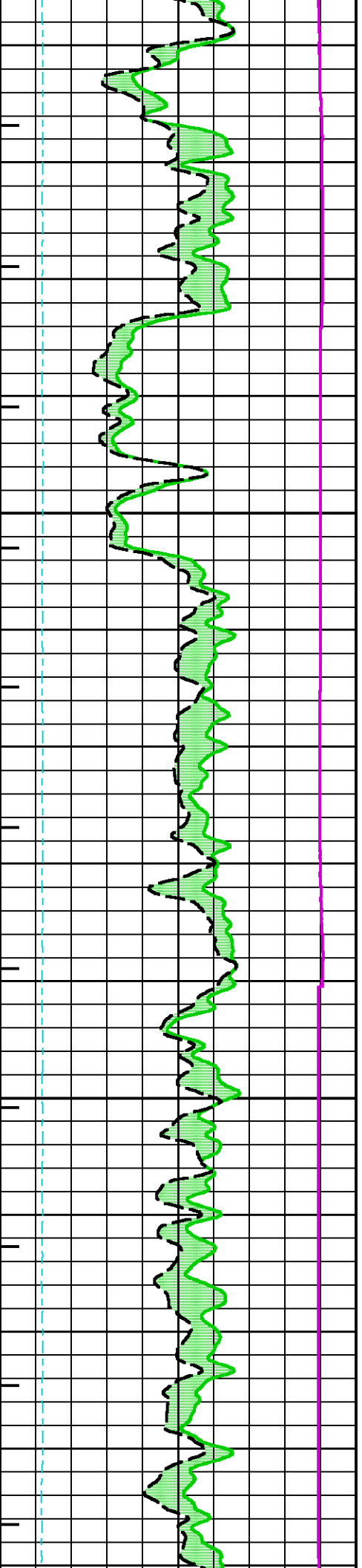
1375

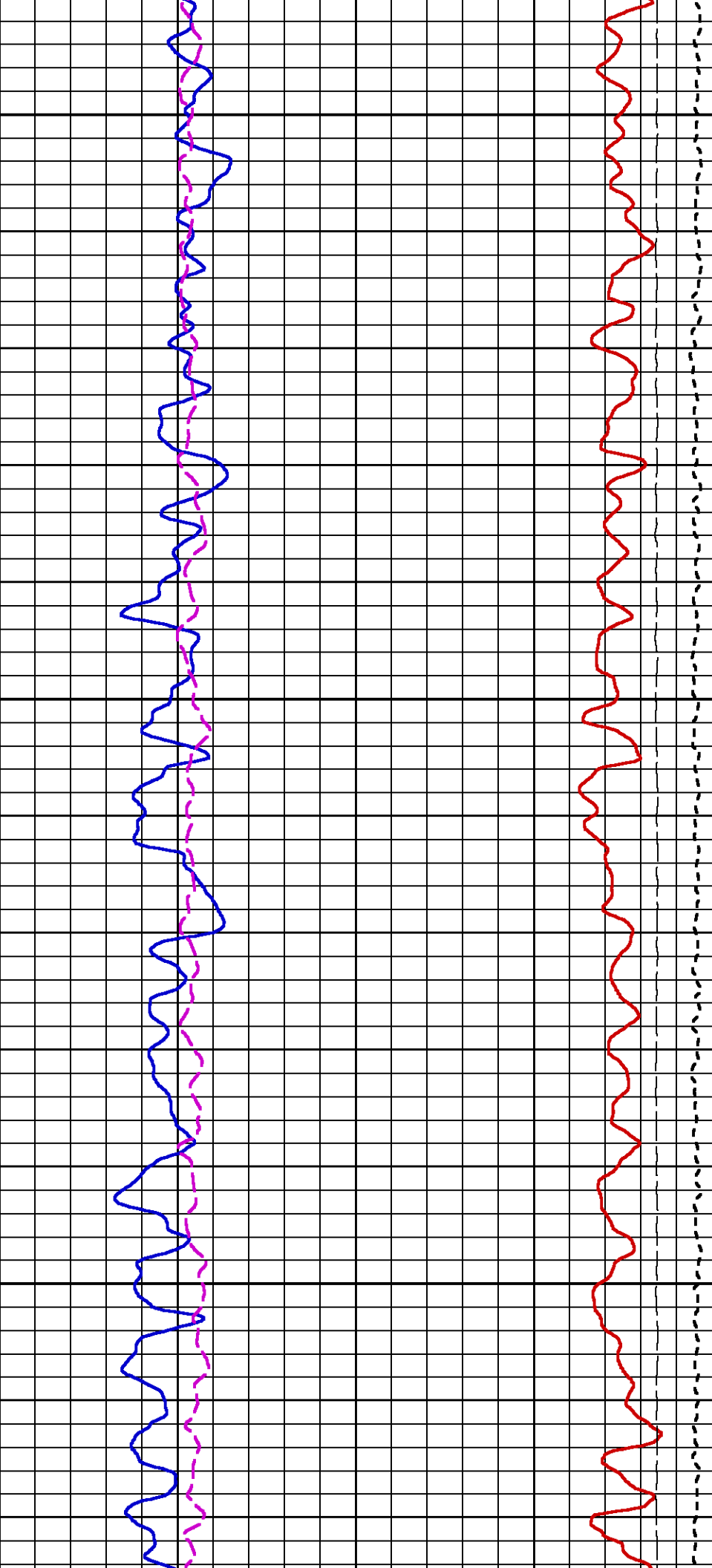




1400

1425

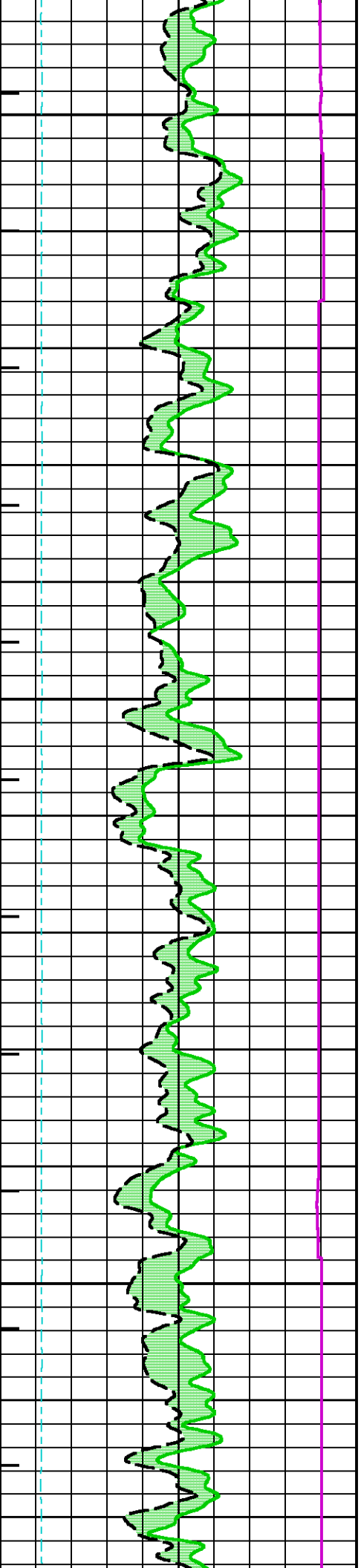


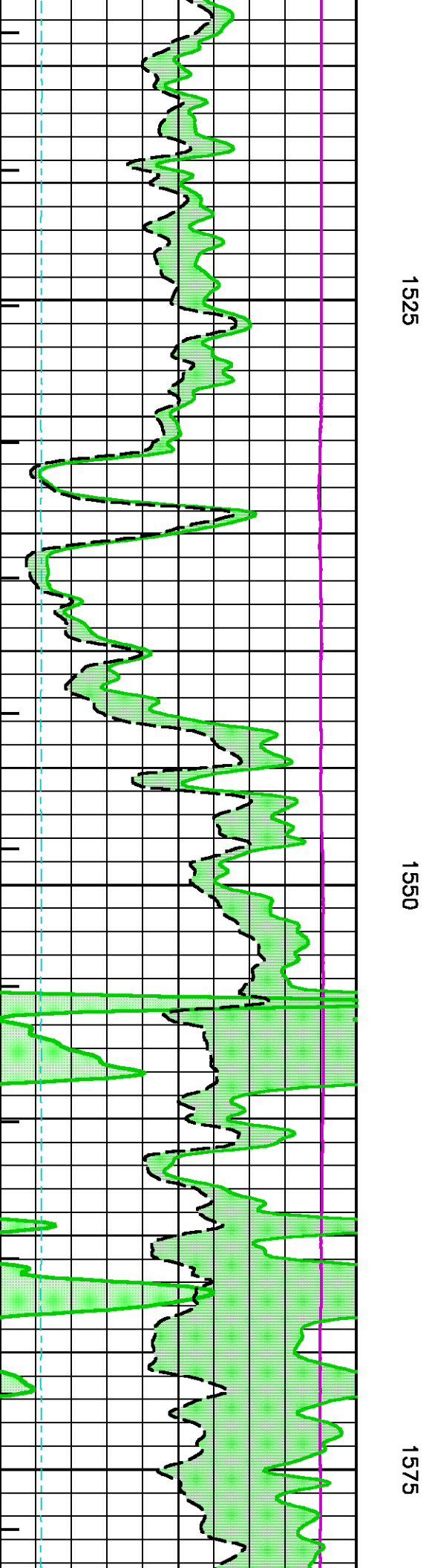
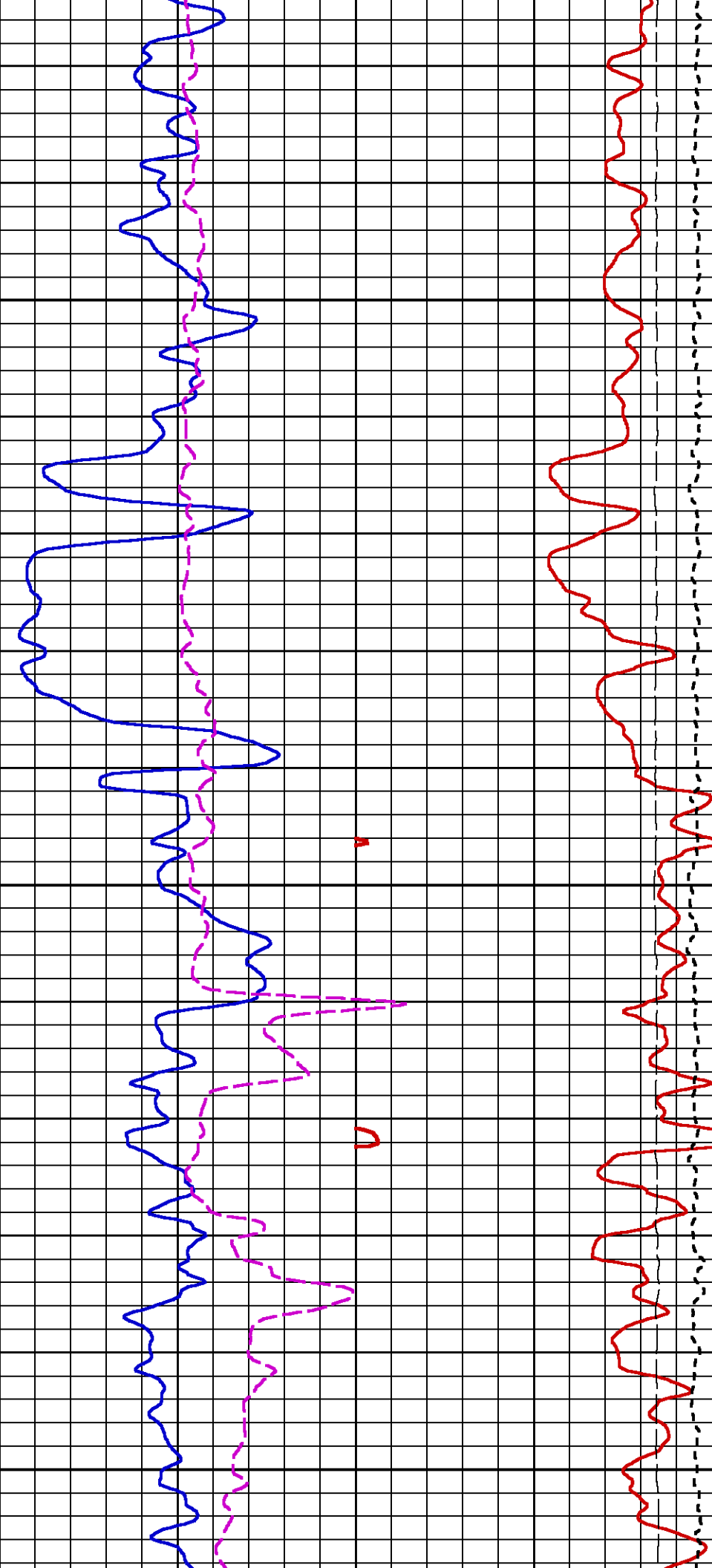


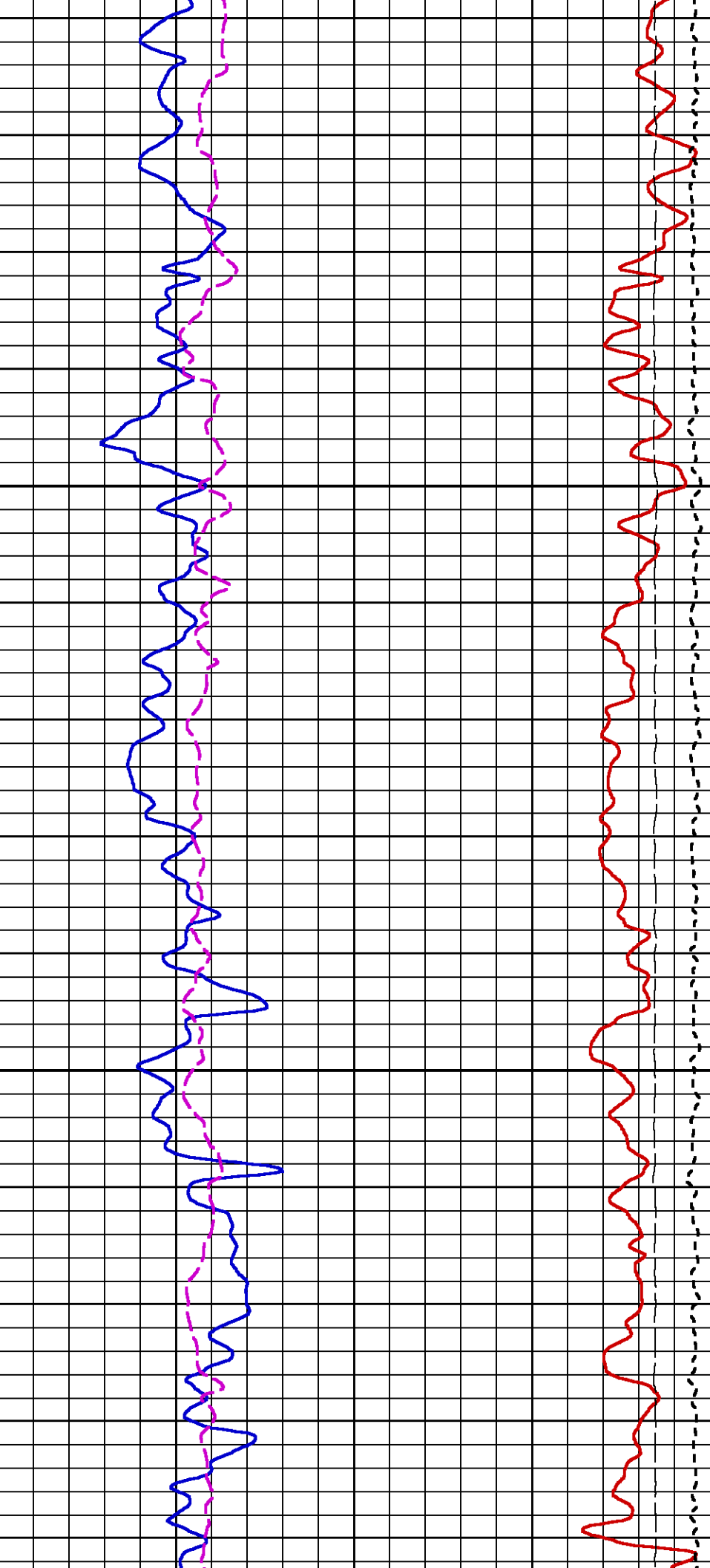
1450

1475

1500

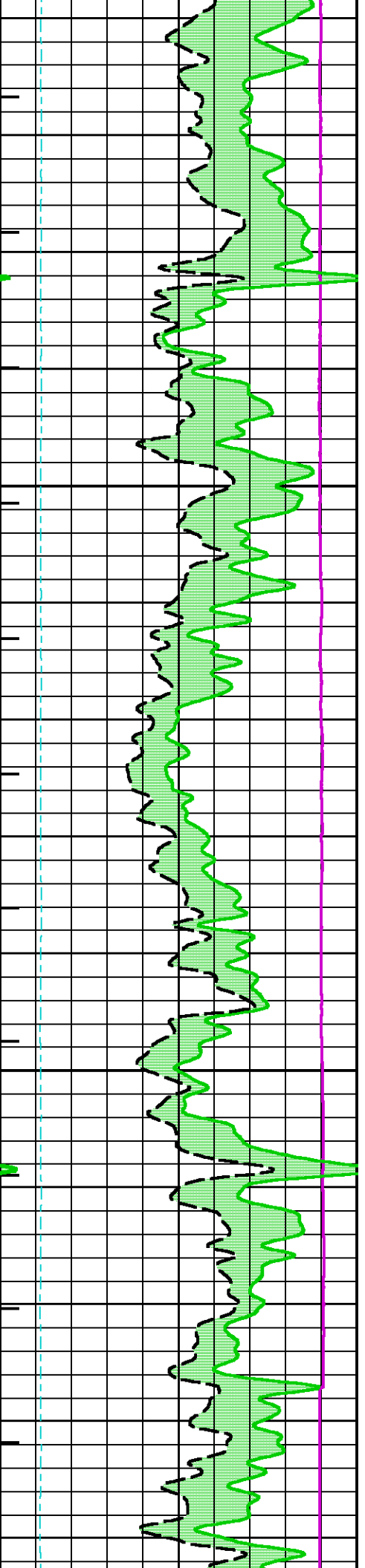


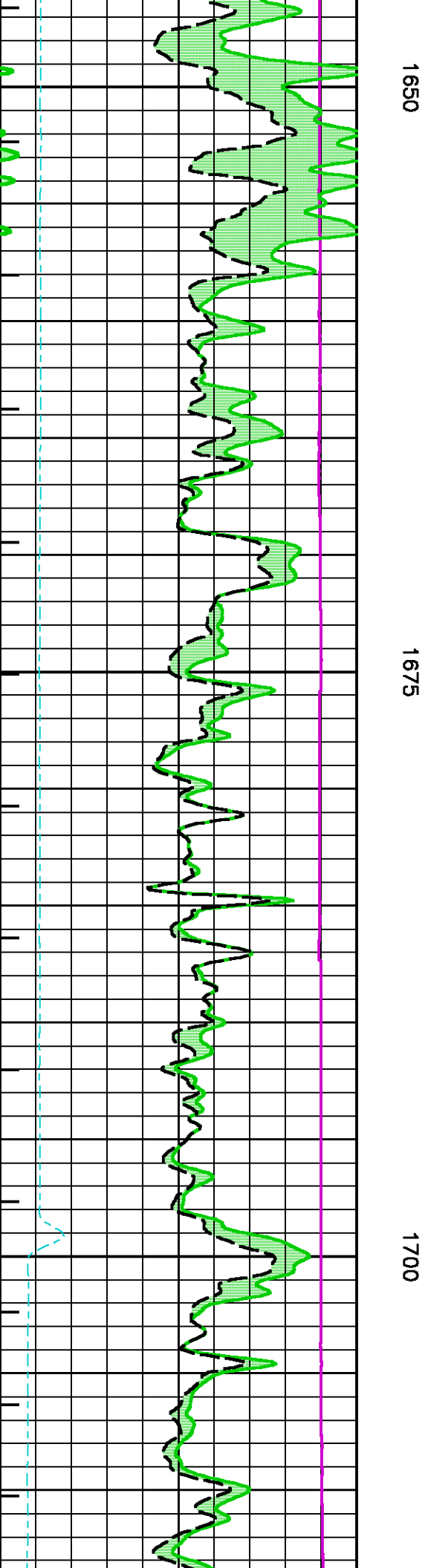
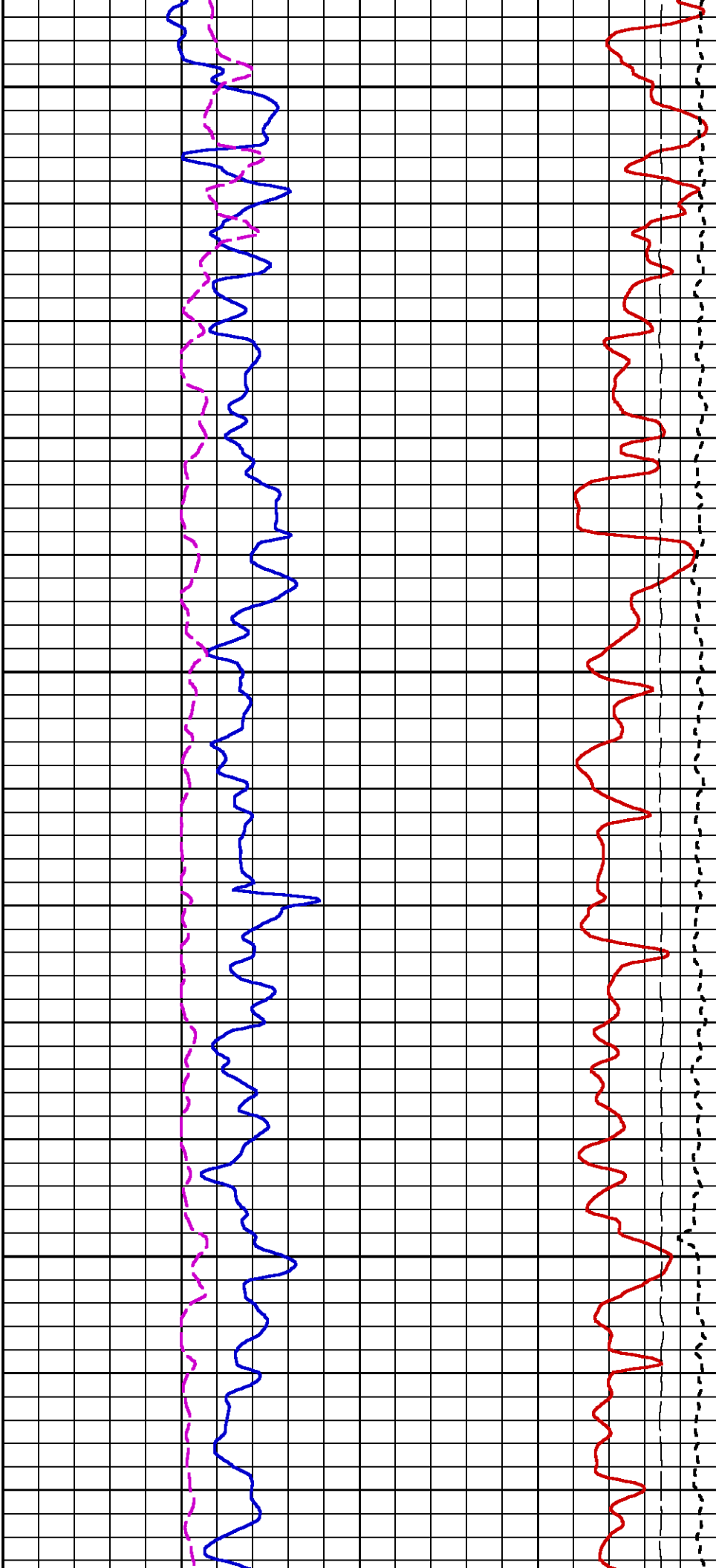


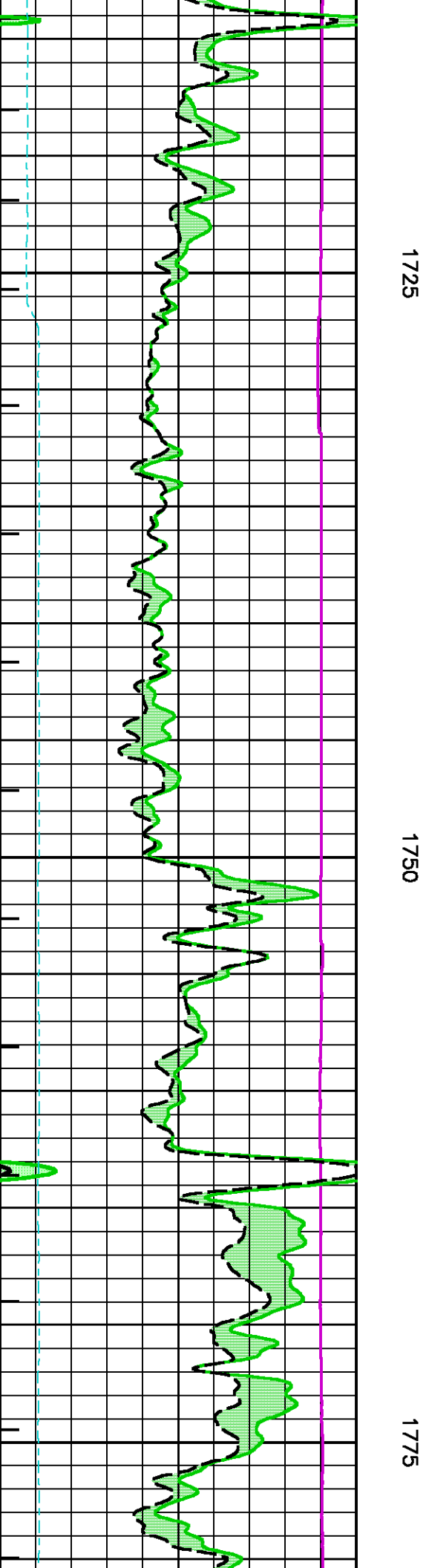
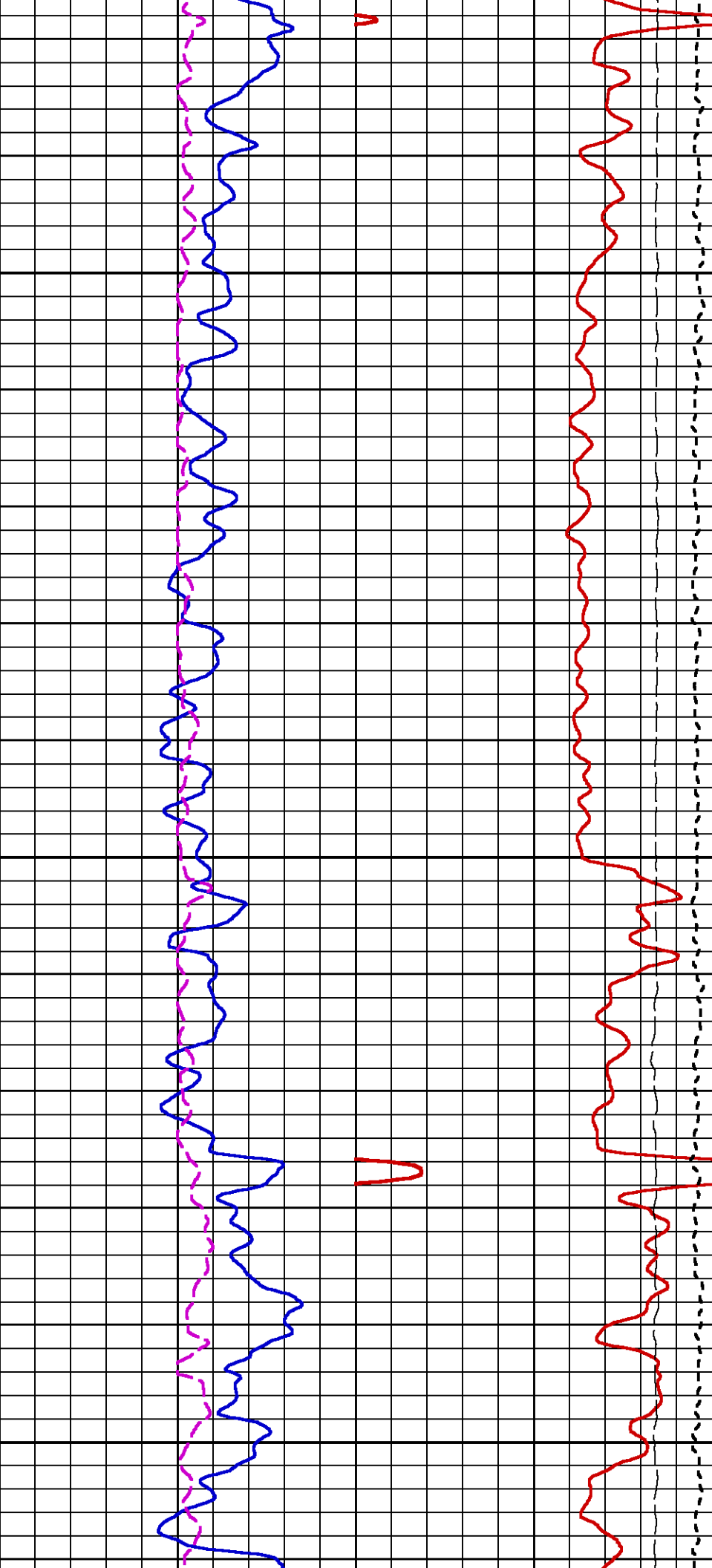


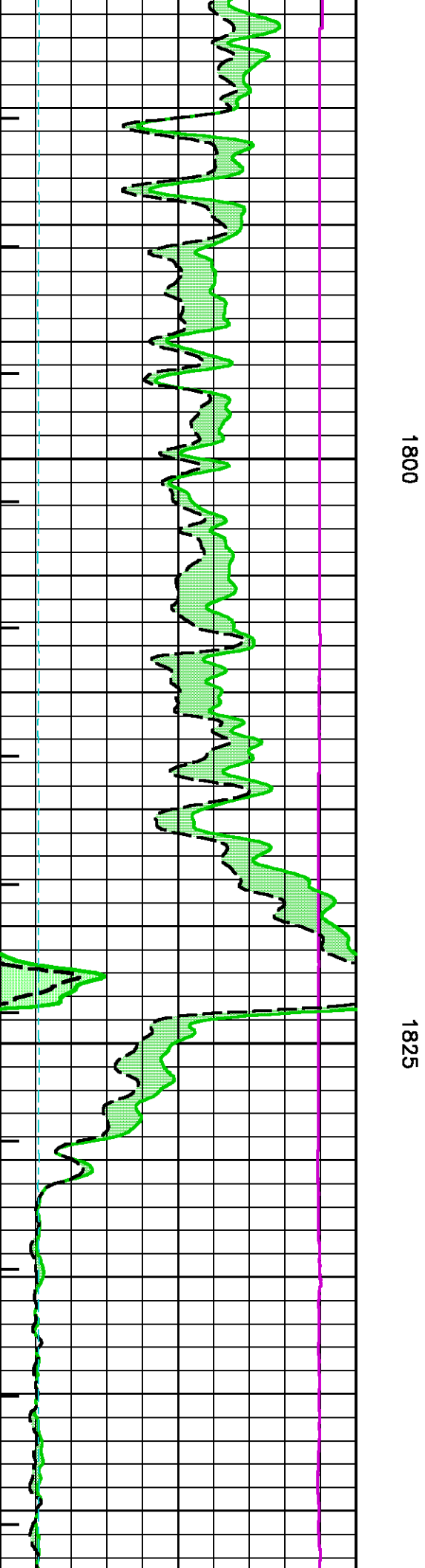
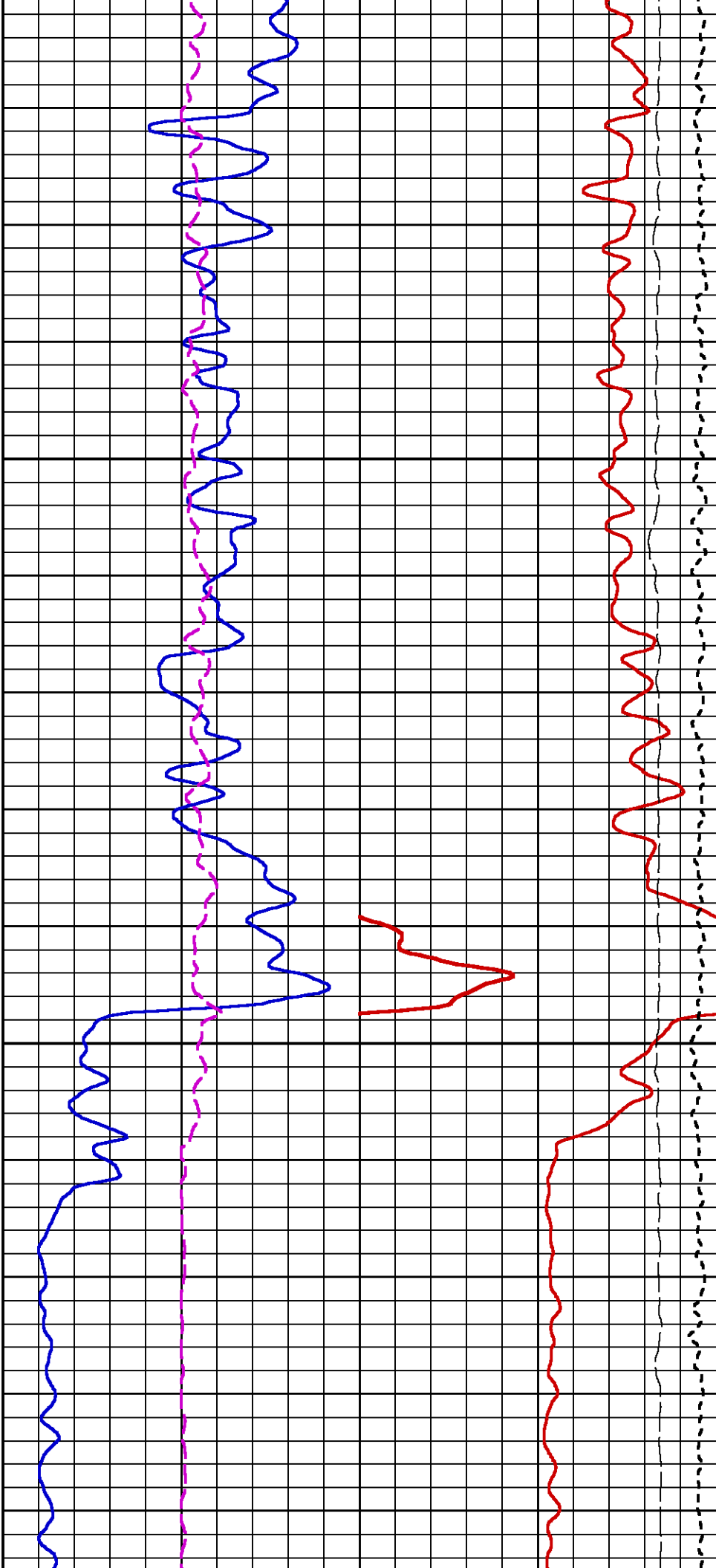
1600

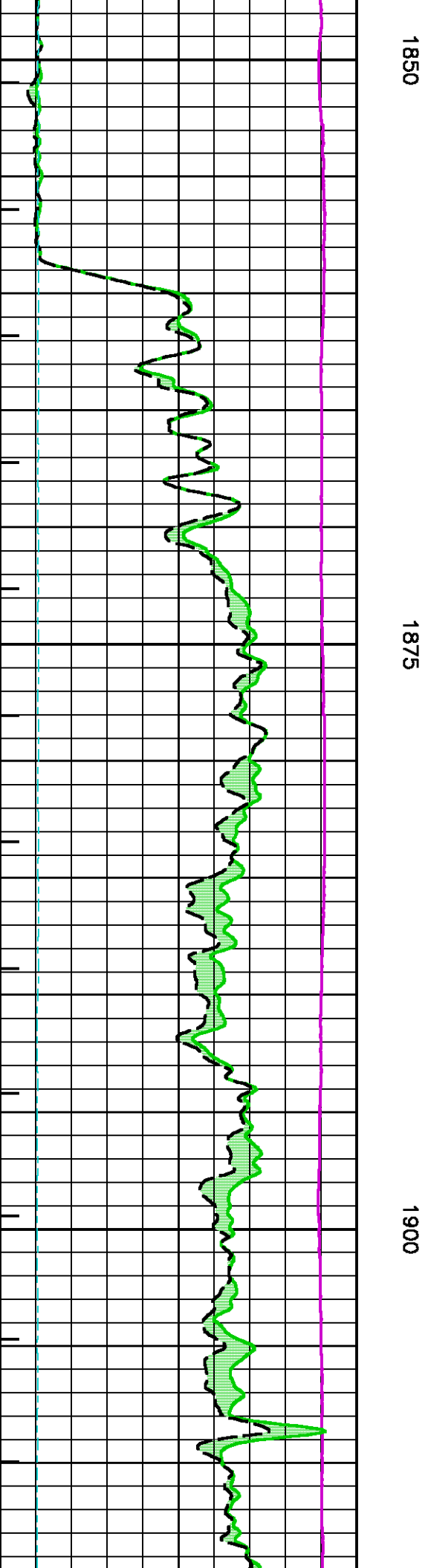
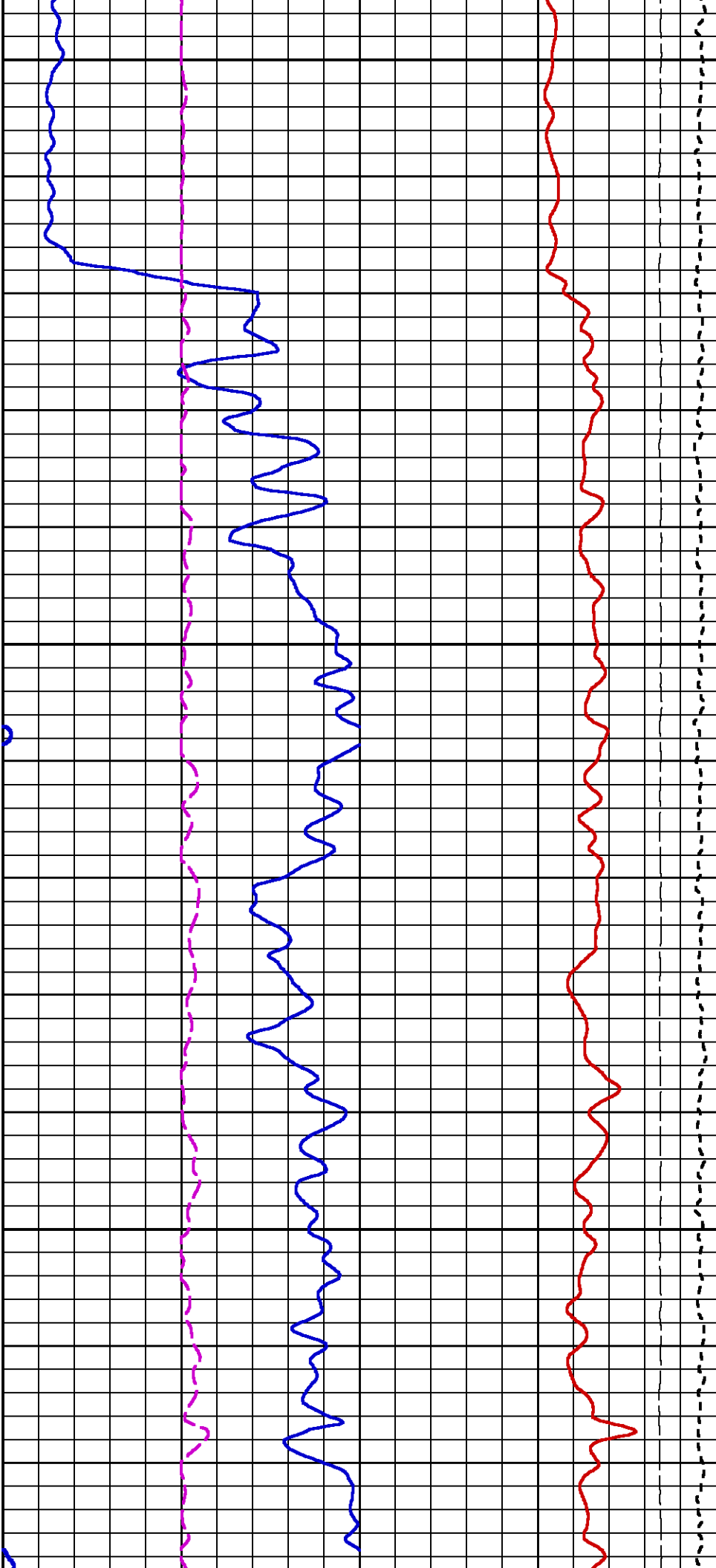
1625

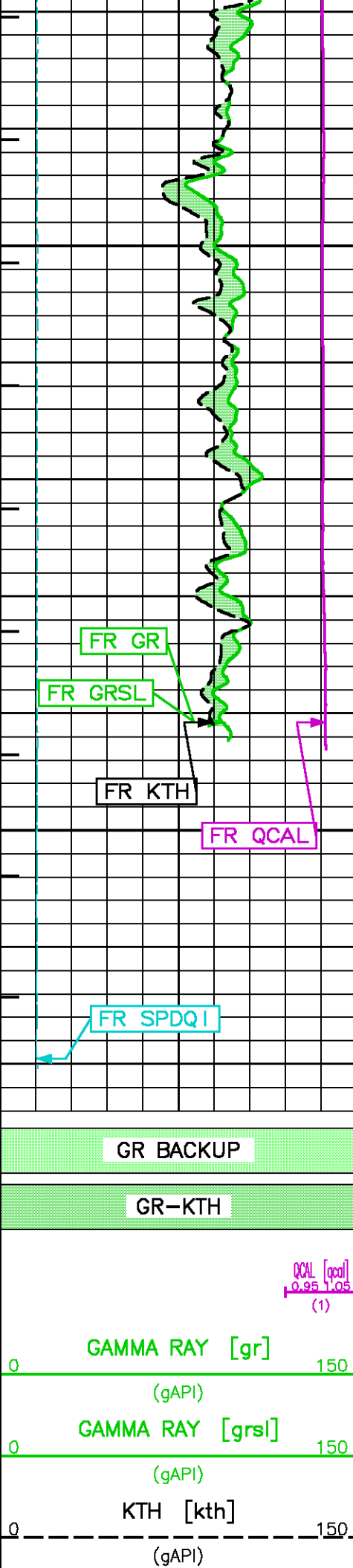










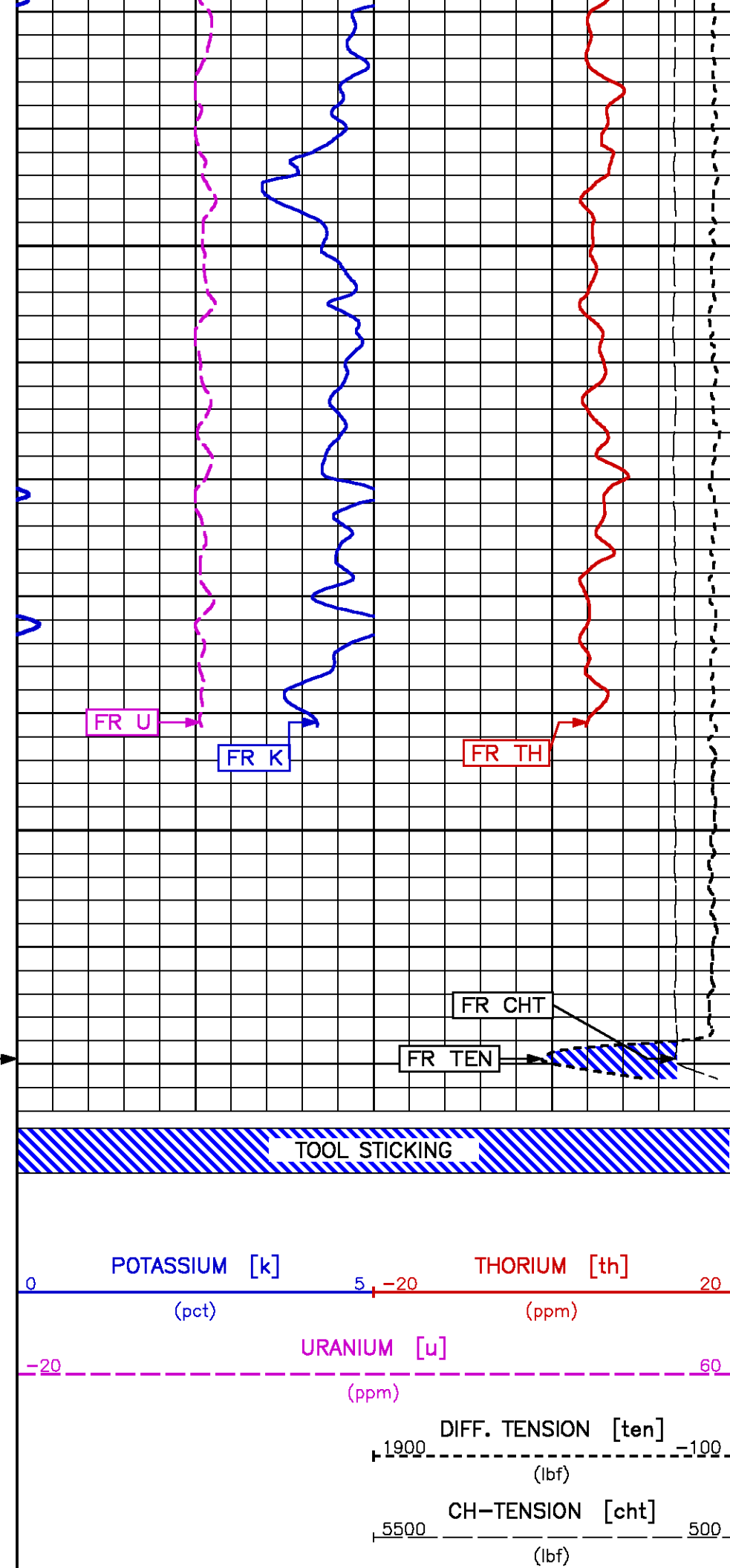


1925

1950

TD

METERS



0	SPEED [spd.i]	50
	(m/min)	
MINUTE MARK		
1		

REPEAT LOG

ECLIPS 6.0i Feb 21, 2008
Updates: 1,40,43

Wed Nov 25 23:09:02 2009

Pcrplt /main/62 Cplot Pdf_Cpp /main/16 Fileview 5.42

PARAMETER AND FILTER SUMMARY REPORT

FILE: /data/pass/vulcan/ku833kR01.prm
LOGGING MODE: DEPTH DIRECTION: UP
TOP DEPTH: 1834.896 m BOTTOM DEPTH: 1975.684 m

SYMMETRIC FILTER

MEASUREMENT TYPE	PARAMETER	VALUE	UNITS	INTERVAL (m)	
CHT	FILTER ()	medium (1)		TOP	BOTTOM
	FILTER (.h)	medium (1)		"	"
	FILTER (.i)	medium (1)		"	"
SPEED	FILTER (.h)	medium (1)		"	"
	FILTER (.i)	medium (1)		"	"
TENSION GR	FILTER ()	medium (1)		"	"
	FILTER ()	medium (1)		"	"
	FILTER (.h)	medium (1)		"	"
SL-II	FILTER (.i)	medium (1)		"	"
	FILTER	medium (1)		"	"

SLII PROCESSING

MEASUREMENT TYPE	PARAMETER	VALUE	UNITS	INTERVAL (m)	
E MATRIX	OPEN/CASED HOLE	OPEN HOLE		TOP	BOTTOM
SLII AUTO GAIN	AUTO GAIN	AUTO GAIN ON		"	"
SLII ENERGY RANGE	ENERGY RANGE	1.30-3.00 MeV		"	"
SPECTRUM CALIBRATION	MODE	AUTOMATIC		"	"

CURVE DESCRIPTION REPORT

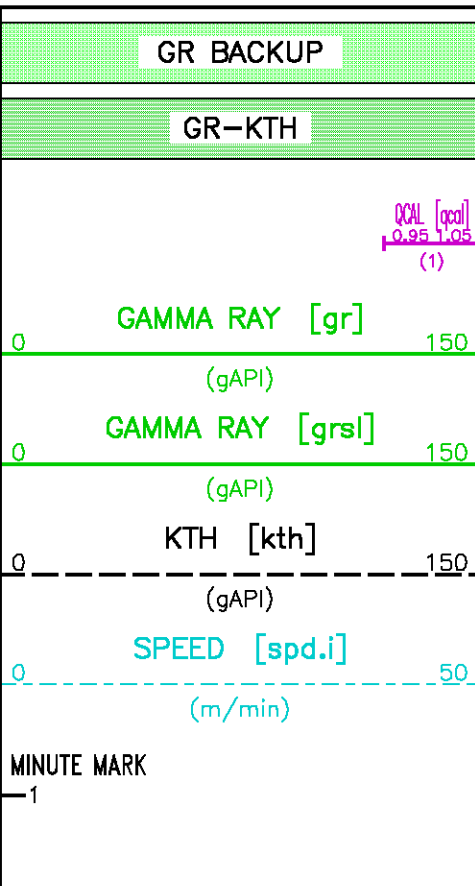
CURVE NAME	CURVE ALIAS	CREATION DATE	CURVE DESCRIPTION
F1:CHT	CHT	Nov 25 21:38:50 2009	CABLE HEAD TENSION
F1:GR	GR	Nov 25 21:38:50 2009	GAMMA RAY
F1:GRSL	GRSL	Nov 25 21:38:50 2009	GAMMA RAY FROM 1329 SPECTRUM
F1:K	K	Nov 25 21:38:50 2009	POTASSIUM CONTENT
F1:KTH	KTH	Nov 25 21:38:50 2009	STRIPPED POTASSIUM-THORIUM
F1:MMRK	MMRK	Nov 25 21:38:50 2009	MINUTE MARK
F1:QCAL	QCAL	Nov 25 21:38:50 2009	QUALITY CURVE
F1:SPDQI	SPD.I	Nov 25 21:38:50 2009	SPEED
F1:TEN	TEN	Nov 25 21:38:50 2009	DIFFERENTIAL TENSION
F1:TH	TH	Nov 25 21:38:50 2009	THORIUM CONCENTRATION
F1:U	U	Nov 25 21:38:50 2009	URANIUM CONTENT

CURVE MEASURE POINT OFFSET

CURVE	OFFSET (m)	CURVE	OFFSET (m)	CURVE	OFFSET (m)	CURVE	OFFSET (m)
CHT	0.00	K	14.40	SPDQI	0.00	U	14.40
GR	14.40	KTH	14.40	TEN	0.00		
GRSL	14.40	QCAL	14.40	TH	14.40		

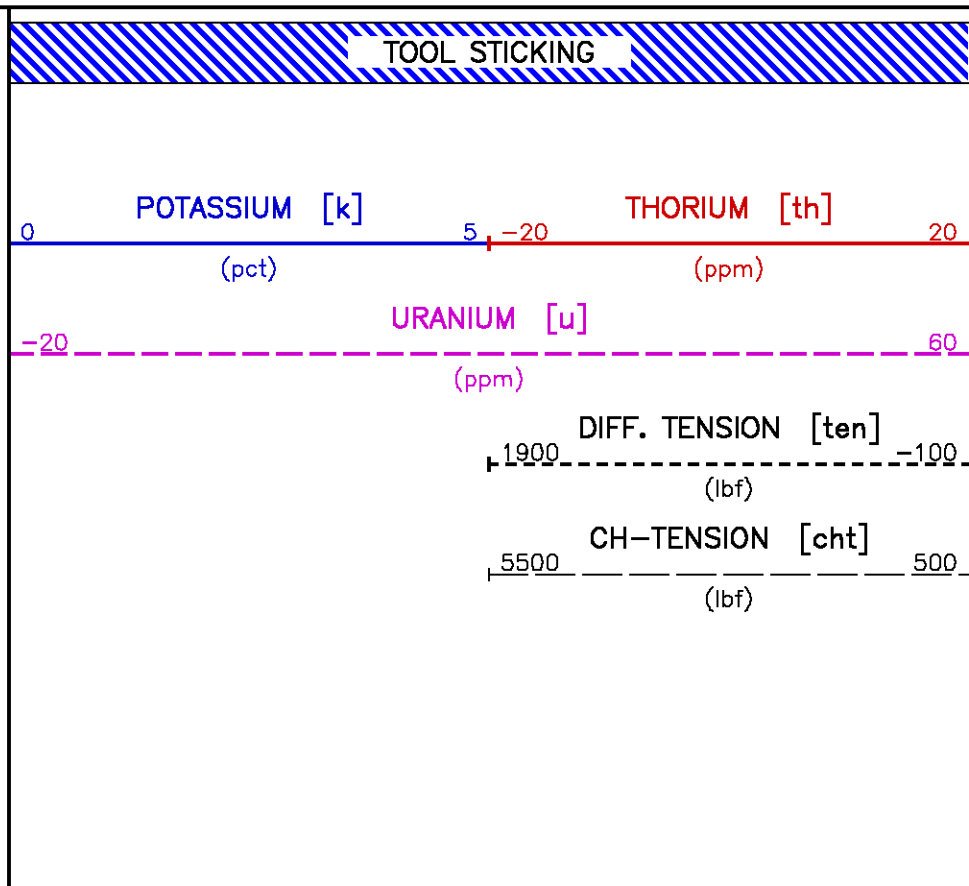
Presentation : cpu1:/dat1a/pass/vulcan/sl_rpt.pdf [1:240 Scale]
Plot Interval : 1845 - 1976.02 Meters

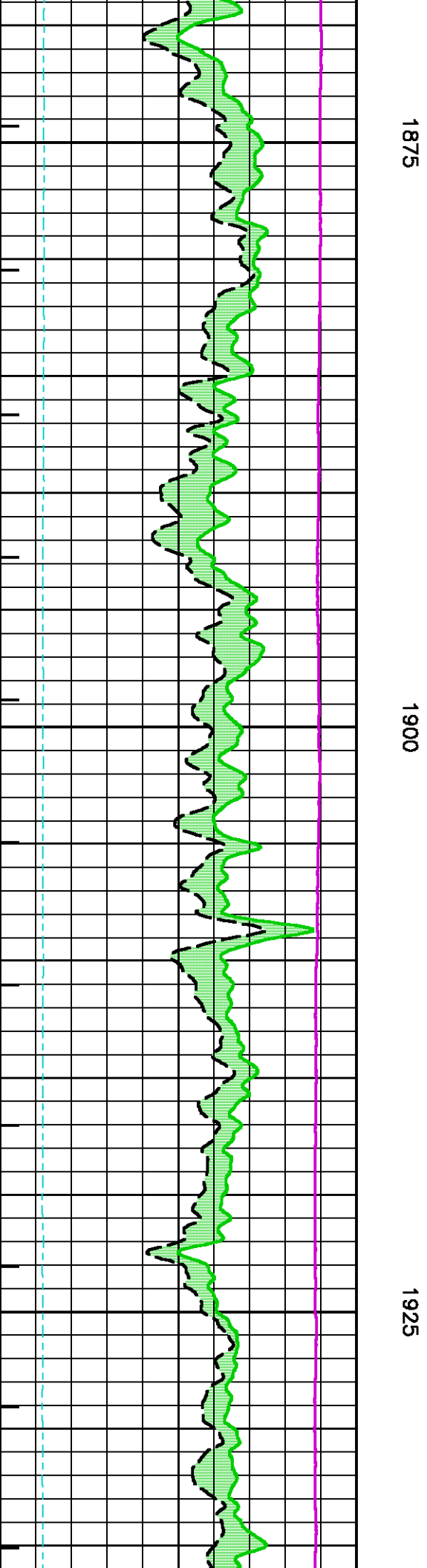
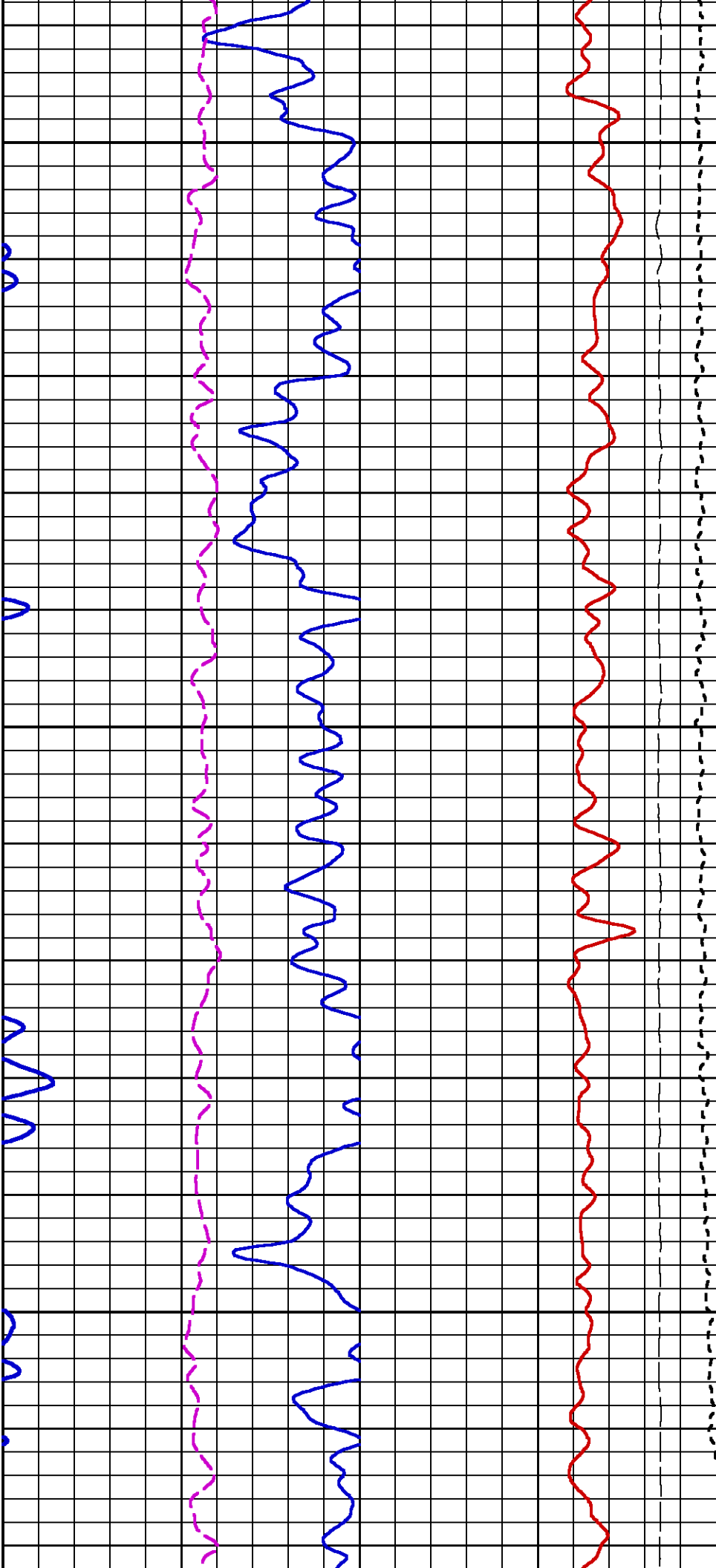
Data File 1 : F1 : cpu1:/dat1a/pass/vulcan/ku833kR01.xtf
Created On : Nov 25 21:38:50 2009
Company : VULCAN MINERALS INC.
Well : VULCAN INVESTCAN RED BROOK #2
Field : RED BROOK
File Interval : 1817.67 - 1976.02 Meters
Oct : ku833k

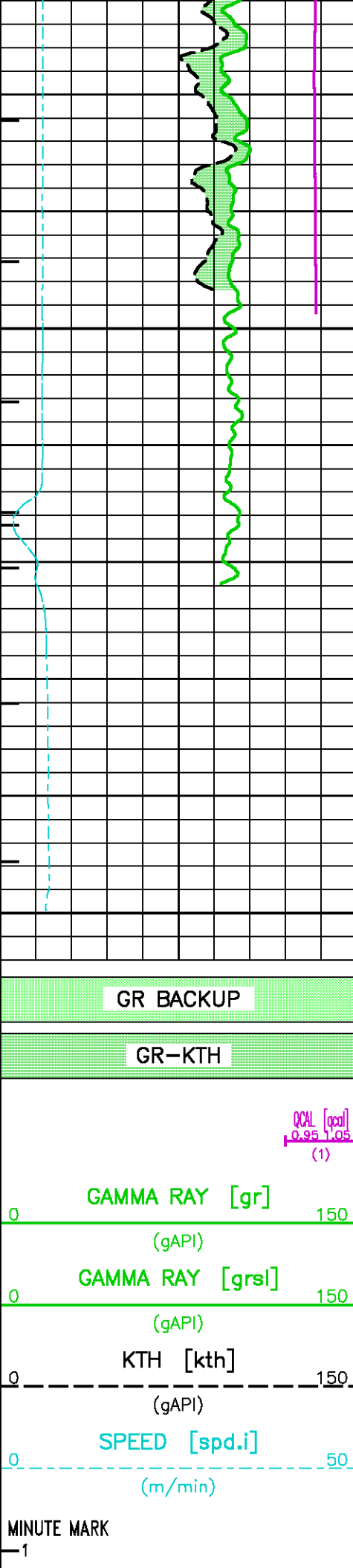


METERS

1850



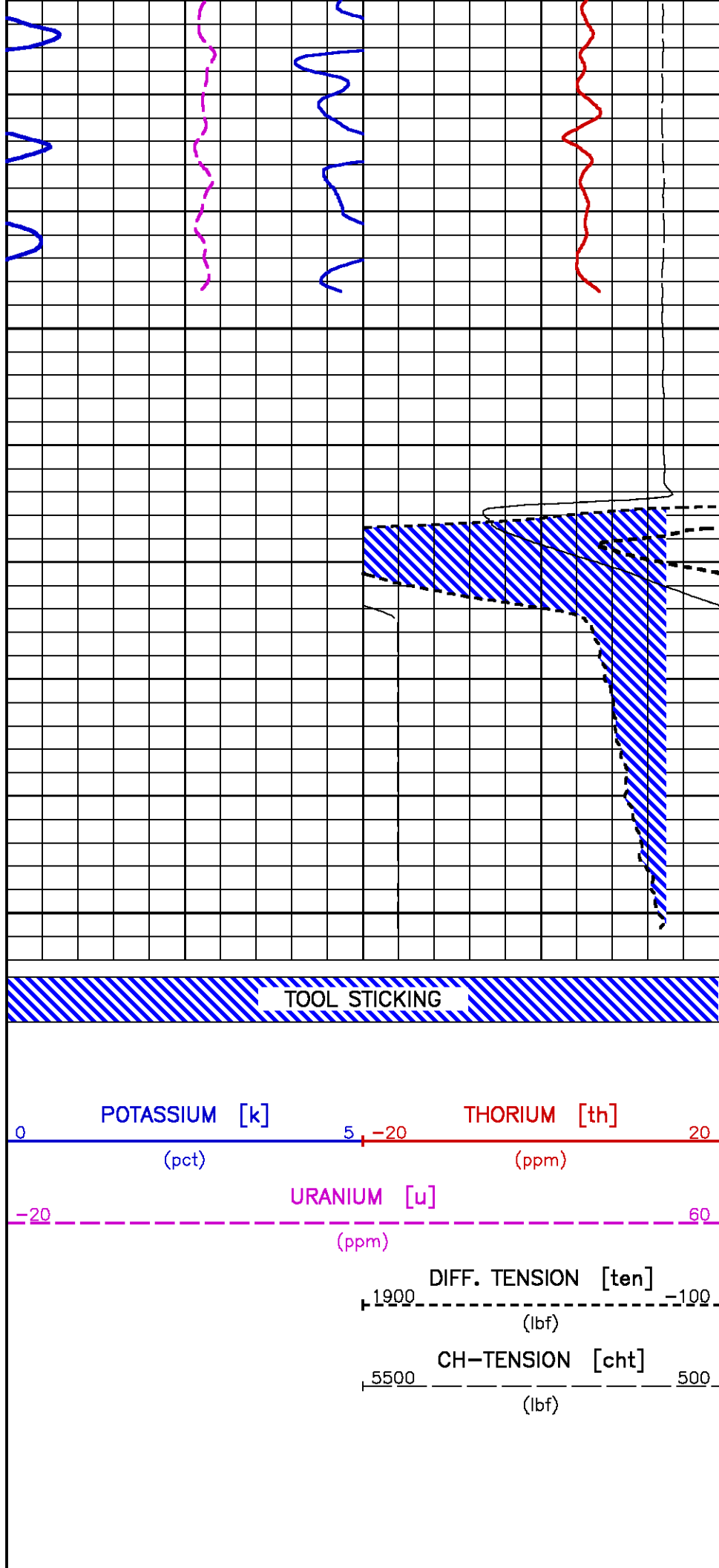




1950

1975

METERS



CALIBRATION / VERIFICATION SUMMARY

Source File: /dat1a/pass/vulcan/k837m.tp1

GR PRIMARY CALIBRATION SUMMARY

TOOL #: 1329XA 370830

DATE/TIME PERFORMED: Sun Nov 1 20:56:33 2009

UNIT #: 3880TA HL6555

CALB JIG #: 4702NK DA-305

	BACKGROUND (cts/s)	CALBRTR ON (cts/s)	CR DIFF (cts/s)	MULT	BACKGROUND (gAPI)	CALBRTR ON (gAPI)	CALBRTR (gAPI)
GR	92.67	922.67	830.0 830.0 960.0	0.181	16.75	166.75	150

GR PRIMARY VERIFICATION SUMMARY

TOOL #: 1329XA 370830

DATE/TIME PERFORMED: Sun Nov 1 21:00:45 2009

UNIT #: 3880TA HL6555

VERI JIG #: 4702NK DA-305

	BACKGROUND (cts/s)	CALBRTR ON (cts/s)	MULT	BACKGROUND (gAPI)	CALBRTR ON (gAPI)	DIFF. (gAPI)
GR	87.82	926.29	0.181	15.87	167.40	151.53 140.00 160.00

GR BEFORE LOG VERIFICATION SUMMARY

NOT DONE

GR AFTER LOG VERIFICATION SUMMARY

NOT DONE

SL_II PRIMARY CALIBRATION SUMMARY

TOOL #: 1329XA 370830

DATE/TIME PERFORMED: Sun Nov 1 20:57:51 2009

UNIT #: 3880TA HL6555

CALIBRATOR ID: 4702NA DA-305

Bkand	Cal ON	Mult	Bkand	Cal ON	Cal Value
-------	--------	------	-------	--------	-----------

	Bkgnd (cts/s)	Cal ON (cts/s)	Mult (gAPI/(cts/s))	Bkgnd (gAPI)	Cal ON (gAPI)	Cal Value (gAPI)
GR-SL (.06-3.5)	87.69	918.42	0.181	15.83	165.83	150

	Std Rate (cts/s)	Meas Rate (cts/s)	Tool Norm	Std Mult	Log Mult	App Con (pct ppm)
E (.15-3.0)	748	717.5	1.042 0.900 1.100			
K				0.01169	0.01219	8.700
U				0.02668	0.02781	20.000
TH				0.07158	0.07462	53.500

	Mult chnl/MeV	Add chnls	Chi Sqr qsa	QCAL	GAIN	QPKS
SPECTRUM	72.248	0.244	0.246	1.003 0.980 1.020	2997	5

	P1 .352 MeV	P2 .609 MeV	P3 1.120 MeV	P4 1.765 MeV	P5 2.204 MeV
Std Pk	25.80	44.20	81.00	127.40	159.00
Meas Pk	25.25 22.80 28.80	44.44 40.20 48.20	81.47 76.00 86.00	128.10 121.40 133.40	159.07 152.00 166.00
Fitted Pk	25.68	44.24	81.16	127.76	159.48

SL_I PRIMARY VERIFICATION SUMMARY

TOOL #: 1329XA 370830

DATE/TIME PERFORMED: Sun Nov 1 21:01:01 2009

UNIT #: 3880TA HL6555

CALIBRATOR ID: 4702NA DA-305

	Bkgnd (cts/s)	Cal ON (cts/s)	Mult (gAPI/(cts/s))	Bkgnd (gAPI)	Cal ON (gAPI)	Cal Value (gAPI)
GR-SL (.06-3.5)	85.40	918.72	0.181	15.42	165.89	150 135 165

	Std rate (cts/s)	Meas rate (cts/s)	Tool norm	Std Mult	Log Mult	App Con (pct ppm)
E (.15-3.0)	748	717.3	1.042			
K				0.01169	0.01219	8.742 7.830 9.570
U				0.02668	0.02781	19.951 18.000 22.000
TH				0.07158	0.07462	53.528 48.150 58.850

	Mult chnl/MeV	Add chnls	Chi Sqr qsa	QCAL	GAIN	QPKS
SPECTRUM	72.389	0.192	0.183	1.004	2997	5



	P1	P2	P3	P4	P5
	.352 MeV	.609 MeV	1.120 MeV	1.765 MeV	2.204 MeV
Std Pk	25.80	44.20	81.00	127.40	159.00
Meas Pk	25.28	44.47	81.73	127.75	159.67
	22.80 28.80	40.20 48.20	76.00 86.00	121.40 133.40	152.00 166.00
Fit Pk	25.67	44.28	81.27	127.96	159.74

SL_II BEFORE LOG VERIFICATION SUMMARY

NOT DONE

SL_II AFTER LOG VERIFICATION SUMMARY

NOT DONE

 Baker Atlas 	COMPANY <u>VULCAN MINERALS INC.</u> WELL <u>VULCAN INVESTCAN RED BROOK #2</u> FIELD <u>BAY ST.GEORGE BASIN</u> PROVINCE <u>NEWFOUNDLAND AND LABRADOR</u>		FILE NO: _____ API NO: _____
	LOCATION: BH LOC. LSD: LAT <u>48.2679591667</u> LONG <u>-58.7501141667</u>	ELEVATIONS: KB <u>63.4 M</u> DF GL <u>57.1 M</u> DATE <u>25-NOV-2009</u>	UID: <u>N/A</u> LICENSE: <u>ADW 2009-116-03</u>